



# MTPN Polyclonal Antibody

Catalog No	BYab-07781
Isotype	IgG
Reactivity	Human;Mouse;Rat
Applications	WB;ELISA
Gene Name	MTPN
Protein Name	Myotrophin (Protein V-1)
Immunogen	Synthesized peptide derived from part region of human protein AA range: 1-50
Specificity	MTPN Polyclonal Antibody detects endogenous levels of protein.
Formulation	Liquid in PBS containing 50% glycerol, and 0.02% sodium azide.
Source	Polyclonal, Rabbit,IgG
Purification	The antibody was affinity-purified from rabbit antiserum by affinity-chromatography using epitope-specific immunogen.
Dilution	WB 1:500-2000 ELISA 1:5000-20000
Concentration	1 mg/ml
Purity	≥90%
Storage Stability	-20°C/1 year
Synonyms	
Observed Band	12kD
Cell Pathway	Cytoplasm . Nucleus . Cytoplasm, perinuclear region .
Tissue Specificity	Ubiquitous.
Function	function:Potential role in cerebellar morphogenesis. May function in differentiation of cerebellar neurons, particularly of granule cells. Seems to be associated with cardiac hypertrophy.,induction:By IFNA1.,miscellaneous:Elicits IgG antibody response in a subset of polycythemia vera patients and as well in patients with chronic myelogenous leukemia and prostate cancer receiving IFNA1 or other therapy, suggesting that it is broadly immunogenic.,miscellaneous:This protein is produced by a bicistronic gene which also produces the MPD6 protein from a non-overlapping reading frame. MPD6 belongs to a group of cryptic antigens without conventional genomic structure. It is encoded by a cryptic open reading frame located in the 3'-untranslated region of MTPN.,miscellaneous:This protein is produced by a bicistronic gene which also produces the MTPN protein from a non-overlapping reading frame. LU

Nanjing BYabscience technology Co.,Ltd



## Background

The transcript produced from this gene is bi-cistronic and can encode both myotrophin and leucine zipper protein 6. The myotrophin protein is associated with cardiac hypertrophy, where it is involved in the conversion of NFkappa B p50-p65 heterodimers to p50-p50 and p65-p65 homodimers. This protein also has a potential function in cerebellar morphogenesis, and it may be involved in the differentiation of cerebellar neurons, particularly of granule cells. A cryptic ORF at the 3' end of this transcript uses a novel internal ribosome entry site and a non-AUG translation initiation codon to produce leucine zipper protein 6, a 6.4 kDa tumor antigen that is associated with myeloproliferative disease. [provided by RefSeq, Jul 2008],

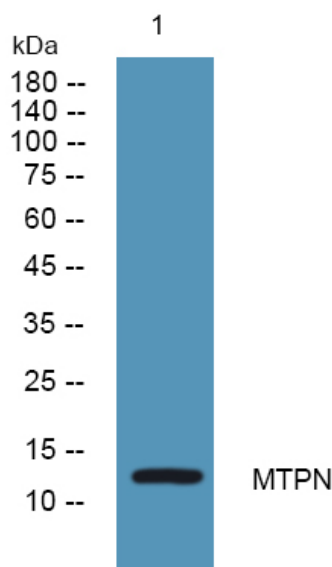
## matters needing attention

Avoid repeated freezing and thawing!

## Usage suggestions

This product can be used in immunological reaction related experiments. For more information, please consult technical personnel.

## Products Images



Western blot analysis of lysates from A431 cells, primary antibody was diluted at 1:1000, 4° over night