



# MUC3A Polyclonal Antibody

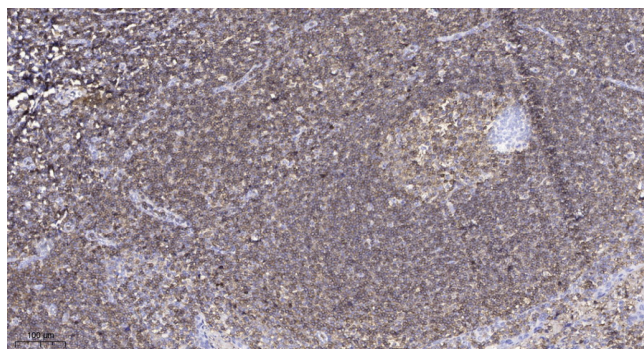
Catalog No	BYab-07783
Isotype	IgG
Reactivity	Human;Rat;Mouse;
Applications	IHC;IF
Gene Name	MUC3A MUC3
Protein Name	Mucin-3A (MUC-3A) (Intestinal mucin-3A)
Immunogen	Synthesized peptide derived from part region of human protein
Specificity	MUC3A Polyclonal Antibody detects endogenous levels of protein.
Formulation	Liquid in PBS containing 50% glycerol, and 0.02% sodium azide.
Source	Polyclonal, Rabbit,IgG
Purification	The antibody was affinity-purified from rabbit antiserum by affinity-chromatography using epitope-specific immunogen.
Dilution	IHC-p 1:50-300. IF 1:50-200
Concentration	1 mg/ml
Purity	≥90%
Storage Stability	-20°C/1 year
Synonyms	
Observed Band	279kD
Cell Pathway	[Isoform 1]: Membrane; Single-pass membrane protein .; [Isoform 2]: Secreted .; [Isoform 3]: Secreted .; [Isoform 4]: Secreted .; [Isoform 5]: Secreted.
Tissue Specificity	Broad specificity; small intestine, colon, colonic tumors, heart, liver, thymus, prostate, pancreas and gall bladder.
Function	alternative products:Additional isoforms seem to exist,function:Major glycoprotein component of a variety of mucus gels. Thought to provide a protective, lubricating barrier against particles and infectious agents at mucosal surfaces.,function:Major glycoprotein component of a variety of mucus gels. Thought to provide a protective, lubricating barrier against particles and infectious agents at mucosal surfaces. May be involved in ligand binding and intracellular signaling.,PTM:Highly O-glycosylated and probably also N-glycosylated.,similarity:Contains 1 EGF-like domain.,similarity:Contains 1 SEA domain.,tissue specificity:Broad specificity; small intestine, colon, colonic tumors, heart, liver, thymus, prostate, pancreas and gall bladder.,tissue specificity:Fetal and adult small intestine and fetal and adult colon.,

Nanjing BYabscience technology Co.,Ltd



<b>Background</b>	The mucin genes encode epithelial glycoproteins, some of which are secreted and some membrane bound. Each of the genes contains at least one large domain of tandemly repeated sequence that encodes the peptide sequence rich in serine and/or threonine residues, which carries most of the O-linked glycosylation (Gendler and Spicer, 1995 [PubMed 7778880]).[supplied by OMIM, Aug 2008],
<b>matters needing attention</b>	Avoid repeated freezing and thawing!
<b>Usage suggestions</b>	This product can be used in immunological reaction related experiments. For more information, please consult technical personnel.

## Products Images



Immunohistochemical analysis of paraffin-embedded human tonsil. 1, Antibody was diluted at 1:200(4° overnight). 2, Tris-EDTA,pH9.0 was used for antigen retrieval. 3,Secondary antibody was diluted at 1:200(room temperature, 45min).