



IDH3G Polyclonal Antibody

Catalog No	BYab-07812
Isotype	IgG
Reactivity	Human;Rat;Mouse;
Applications	WB;ELISA
Gene Name	IDH3G
Protein Name	Isocitrate dehydrogenase [NAD] subunit gamma, mitochondrial (EC 1.1.1.41) (Isocitric dehydrogenase subunit gamma) (NAD(+)-specific ICDH subunit gamma)
Immunogen	Synthesized peptide derived from part region of human protein
Specificity	IDH3G Polyclonal Antibody detects endogenous levels of protein.
Formulation	Liquid in PBS containing 50% glycerol, and 0.02% sodium azide.
Source	Polyclonal, Rabbit,IgG
Purification	The antibody was affinity-purified from rabbit antiserum by affinity-chromatography using epitope-specific immunogen.
Dilution	WB 1:500-2000 ELISA 1:5000-20000
Concentration	1 mg/ml
Purity	≥90%
Storage Stability	-20°C/1 year
Synonyms	
Observed Band	43kD
Cell Pathway	Mitochondrion .
Tissue Specificity	Brain,Heart,Placenta,Skin,Soares liver spleen 1NFLS,
Function	catalytic activity:Isocitrate + NAD(+) = 2-oxoglutarate + CO(2) + NADH.,cofactor:Binds 1 magnesium or manganese ion per subunit.,enzyme regulation:Activated by increasing ADP/ATP ratios and by Ca(2+).,similarity:Belongs to the isocitrate and isopropylmalate dehydrogenases family.,subunit:Heterooligomer of subunits alpha, beta, and gamma in the apparent ratio of 2:1:1.,
Background	Isocitrate dehydrogenases catalyze the oxidative decarboxylation of isocitrate to 2-oxoglutarate. These enzymes belong to two distinct subclasses, one of which utilizes NAD(+) as the electron acceptor and the other NADP(+). Five isocitrate dehydrogenases have been reported: three NAD(+)-dependent isocitrate dehydrogenases, which localize to the mitochondrial matrix, and two

Nanjing BYabscience technology Co.,Ltd



NADP(+)-dependent isocitrate dehydrogenases, one of which is mitochondrial and the other predominantly cytosolic. NAD(+)-dependent isocitrate dehydrogenases catalyze the allosterically regulated rate-limiting step of the tricarboxylic acid cycle. Each isozyme is a heterotetramer that is composed of two alpha subunits, one beta subunit, and one gamma subunit. The protein encoded by this gene is the gamma subunit of one isozyme of NAD(+)-dependent isocitrate dehydrogenase. This gene is a candidate gene for p

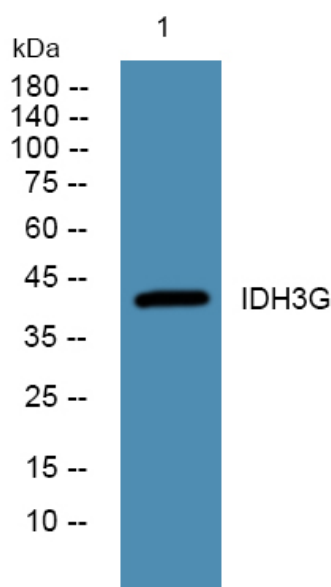
matters needing attention

Avoid repeated freezing and thawing!

Usage suggestions

This product can be used in immunological reaction related experiments. For more information, please consult technical personnel.

Products Images



Western blot analysis of lysates from K562 cells, primary antibody was diluted at 1:1000, 4° over night