



# TBC1D15 rabbit pAb

Catalog No	BYab-07895
Isotype	IgG
Reactivity	Human; Mouse
Applications	WB
Gene Name	TBC1D15
Protein Name	TBC1D15
Immunogen	Synthesized peptide derived from human TBC1D15 AA range: 604-654
Specificity	This antibody detects endogenous levels of TBC1D15 at Human/Mouse
Formulation	Liquid in PBS containing 50% glycerol, 0.5% BSA and 0.09% sodium azide.
Source	Polyclonal, Rabbit,IgG
Purification	The antibody was affinity-purified from rabbit serum by affinity-chromatography using specific immunogen.
Dilution	WB 1:500-2000
Concentration	1 mg/ml
Purity	≥90%
Storage Stability	-20°C/1 year
Synonyms	TBC1 domain family member 15 (GTPase-activating protein RAB7) (GAP for RAB7) (Rab7-GAP)
Observed Band	75kD
Cell Pathway	Cytoplasm .
Tissue Specificity	Ubiquitous.
Function	function:May act as a GTPase-activating protein for Rab family protein(s).,similarity:Contains 1 Rab-GAP TBC domain.,
Background	This gene encodes a member of the Ras-like proteins in brain-GTPase activating protein superfamily that share a conserved Tre-2/Bub2/Cdc16 domain. The encoded protein interacts with Ras-like protein in brain 5A and may function as a regulator of intracellular trafficking. Alternate splicing results in multiple transcript variants. [provided by RefSeq, Apr 2009],
matters needing attention	Avoid repeated freezing and thawing!

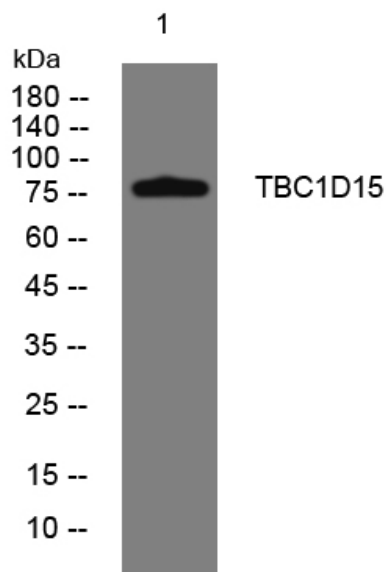
Nanjing BYabs science technology Co.,Ltd



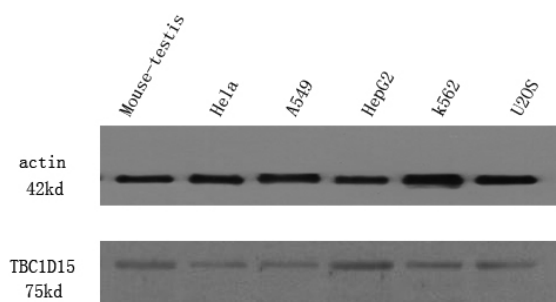
## Usage suggestions

This product can be used in immunological reaction related experiments. For more information, please consult technical personnel.

## Products Images



Western blot analysis of lysates from K562 cells, primary antibody was diluted at 1:1000, 4° over night



Western Blot analysis of Hela cell lysis, treated by EGF. Primary Antibody was diluted at 1:1000. Secondary antibody (catalog#: RS23920) was diluted at 1:10000

Nanjing BYabs science technology Co., Ltd

网址: [www.njbybio.com](http://www.njbybio.com)

官方热线: 025-5229-8998

监督电话: 15950492658