



# ARHL1 rabbit pAb

<b>Catalog No</b>	BYab-07931
<b>Isotype</b>	IgG
<b>Reactivity</b>	Human; Mouse;Rat
<b>Applications</b>	WB
<b>Gene Name</b>	ADPRHL1 ARH2
<b>Protein Name</b>	ARHL1
<b>Immunogen</b>	Synthesized peptide derived from human ARHL1 AA range: 174-224
<b>Specificity</b>	This antibody detects endogenous levels of ARHL1 at Human/Mouse/Rat
<b>Formulation</b>	Liquid in PBS containing 50% glycerol, 0.5% BSA and 0.45% sodium azide.
<b>Source</b>	Polyclonal, Rabbit,IgG
<b>Purification</b>	The antibody was affinity-purified from rabbit serum by affinity-chromatography using specific immunogen.
<b>Dilution</b>	WB 1:500-2000
<b>Concentration</b>	1 mg/ml
<b>Purity</b>	≥90%
<b>Storage Stability</b>	-20°C/1 year
<b>Synonyms</b>	[Protein ADP-ribosylarginine] hydrolase-like protein 1 (ADP-ribosylhydrolase 2)
<b>Observed Band</b>	38kD
<b>Cell Pathway</b>	Cytoplasm, myofibril, sarcomere .
<b>Tissue Specificity</b>	Ovary,
<b>Function</b>	similarity:Belongs to the ADP-ribosylglycohydrolase family.,
<b>Background</b>	ADP-ribosylation is a reversible posttranslational modification used to regulate protein function. ADP-ribosyltransferases (see ART1; MIM 601625) transfer ADP-ribose from NAD <sup>+</sup> to the target protein, and ADP-ribosylhydrolases, such as ADPRHL1, reverse the reaction (Glowacki et al., 2002 [PubMed 12070318]).[supplied by OMIM, Mar 2008],
<b>matters needing attention</b>	Avoid repeated freezing and thawing!

**Nanjing BYabscience technology Co.,Ltd**

网址: [www.njbybio.com](http://www.njbybio.com)

官方热线: 025-5229-8998

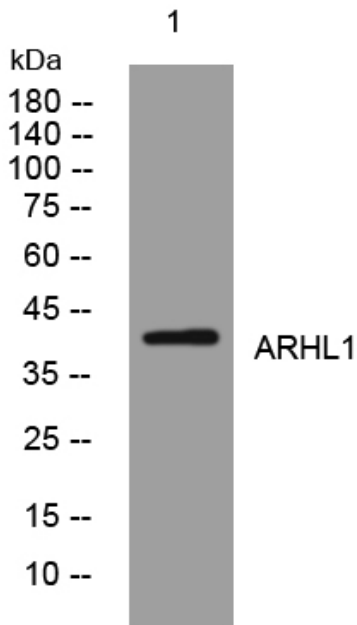
监督电话: 15950492658



### Usage suggestions

This product can be used in immunological reaction related experiments. For more information, please consult technical personnel.

### Products Images



Western blot analysis of lysates from THP-1 cells, primary antibody was diluted at 1:1000, 4° over night