



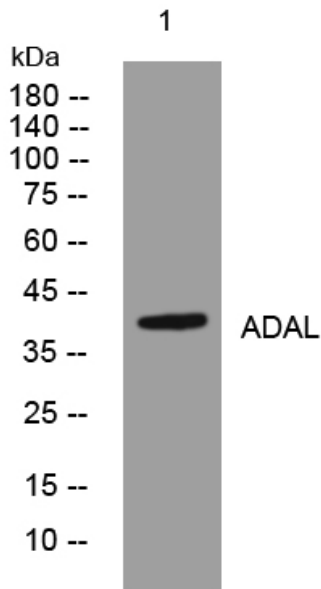
ADAL rabbit pAb

Catalog No	BYab-07949
Isotype	IgG
Reactivity	Human; Mouse
Applications	WB
Gene Name	ADAL
Protein Name	ADAL
Immunogen	Synthesized peptide derived from human ADAL AA range: 217-267
Specificity	This antibody detects endogenous levels of ADAL at Human/Mouse
Formulation	Liquid in PBS containing 50% glycerol, 0.5% BSA and 0.63% sodium azide.
Source	Polyclonal, Rabbit,IgG
Purification	The antibody was affinity-purified from rabbit serum by affinity-chromatography using specific immunogen.
Dilution	WB 1:500-2000
Concentration	1 mg/ml
Purity	≥90%
Storage Stability	-20°C/1 year
Synonyms	Adenosine deaminase-like protein (EC 3.5.4.-)
Observed Band	38kD
Cell Pathway	cytosol,
Tissue Specificity	Brain,
Function	similarity:Belongs to the adenosine and AMP deaminases family.,
Background	
matters needing attention	Avoid repeated freezing and thawing!
Usage suggestions	This product can be used in immunological reaction related experiments. For more information, please consult technical personnel.

Nanjing BYabscience technology Co.,Ltd



Products Images



Western blot analysis of lysates from HuvEc cells,
primary antibody was diluted at 1:1000, 4° over night