



# GNAI2 rabbit pAb

<b>Catalog No</b>	BYab-07954
<b>Isotype</b>	IgG
<b>Reactivity</b>	Human; Mouse;Rat
<b>Applications</b>	WB
<b>Gene Name</b>	GNAI2 GNAI2B
<b>Protein Name</b>	GNAI2
<b>Immunogen</b>	Synthesized peptide derived from human GNAI2 AA range: 274-324
<b>Specificity</b>	This antibody detects endogenous levels of GNAI2 at Human/Mouse/Rat
<b>Formulation</b>	Liquid in PBS containing 50% glycerol, 0.5% BSA and 0.68% sodium azide.
<b>Source</b>	Polyclonal, Rabbit,IgG
<b>Purification</b>	The antibody was affinity-purified from rabbit serum by affinity-chromatography using specific immunogen.
<b>Dilution</b>	WB 1:500-2000
<b>Concentration</b>	1 mg/ml
<b>Purity</b>	≥90%
<b>Storage Stability</b>	-20°C/1 year
<b>Synonyms</b>	Guanine nucleotide-binding protein G(i) subunit alpha-2 (Adenylate cyclase-inhibiting G alpha protein)
<b>Observed Band</b>	38kD
<b>Cell Pathway</b>	Cytoplasm . Cytoplasm, cytoskeleton, microtubule organizing center, centrosome . Cell membrane . Membrane ; Lipid-anchor . Localizes in the centrosomes of interphase and mitotic cells. Detected at the cleavage furrow and/or the midbody.
<b>Tissue Specificity</b>	Brain,Cerebellum,Kidney,Lung,Mammary gland,Testis,
<b>Function</b>	function:Guanine nucleotide-binding proteins (G proteins) are involved as modulators or transducers in various transmembrane signaling systems. The G(i) proteins are involved in hormonal regulation of adenylate cyclase: they inhibit the cyclase in response to beta-adrenergic stimuli.,similarity:Belongs to the G-alpha family. G(i/o/t/z) subfamily.,subunit:G proteins are composed of 3 units; alpha, beta and gamma. The alpha chain contains the guanine nucleotide binding site. Interacts with GPSM1 (By similarity). Interacts with UNC5B.,
<b>Background</b>	The protein encoded by this gene is an alpha subunit of guanine nucleotide binding proteins (G proteins). The encoded protein contains the guanine

**Nanjing BYabscience technology Co.,Ltd**



nucleotide binding site and is involved in the hormonal regulation of adenylate cyclase. Several transcript variants encoding different isoforms have been found for this gene. [provided by RefSeq, Sep 2013],

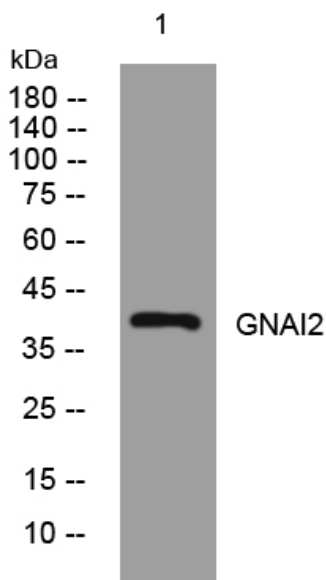
**matters needing attention**

Avoid repeated freezing and thawing!

**Usage suggestions**

This product can be used in immunological reaction related experiments. For more information, please consult technical personnel.

## Products Images



Western blot analysis of lysates from HpeG2 cells, primary antibody was diluted at 1:1000, 4° over night