



KLF2 rabbit pAb

Catalog No	BYab-07956
Isotype	IgG
Reactivity	Human; Mouse;Rat
Applications	WB
Gene Name	KLF2 LKLF
Protein Name	KLF2
Immunogen	Synthesized peptide derived from human KLF2 AA range: 196-246
Specificity	This antibody detects endogenous levels of KLF2 at Human/Mouse/Rat
Formulation	Liquid in PBS containing 50% glycerol, 0.5% BSA and 0.70% sodium azide.
Source	Polyclonal, Rabbit,IgG
Purification	The antibody was affinity-purified from rabbit serum by affinity-chromatography using specific immunogen.
Dilution	WB 1:500-2000
Concentration	1 mg/ml
Purity	≥90%
Storage Stability	-20°C/1 year
Synonyms	Krueppel-like factor 2 (Lung krueppel-like factor)
Observed Band	38kD
Cell Pathway	Nucleus .
Tissue Specificity	Brain,Hair follicle dermal papilla,Lung,Spleen,
Function	function: Binds to the CACCC box in the beta-globin gene promoter and activates transcription.,similarity: Belongs to the krueppel C2H2-type zinc-finger protein family.,similarity: Contains 3 C2H2-type zinc fingers.,subunit: Interacts with WWP1.,
Background	Kruppel-like factors (KLFs) are a family of broadly expressed zinc finger transcription factors. KLF2 regulates T-cell trafficking by promoting expression of the lipid-binding receptor S1P1 (S1PR1; MIM 601974) and the selectin CD62L (SELL; MIM 153240) (summary by Weinreich et al., 2009 [PubMed 19592277]).[supplied by OMIM, Feb 2011],

Nanjing BYabscience technology Co.,Ltd

网址: www.njbybio.com

官方热线: 025-5229-8998

监督电话: 15950492658



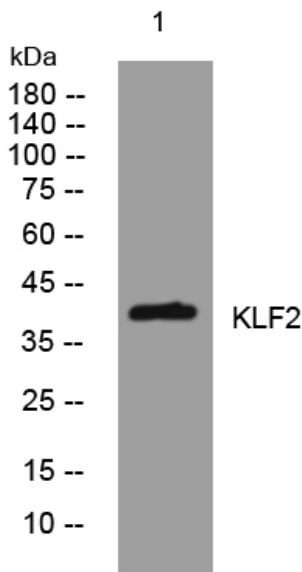
matters needing attention

Avoid repeated freezing and thawing!

Usage suggestions

This product can be used in immunological reaction related experiments. For more information, please consult technical personnel.

Products Images



Western blot analysis of lysates from HeLa cells, primary antibody was diluted at 1:1000, 4° over night