



SYTL1 rabbit pAb

Catalog No	BYab-07987
Isotype	IgG
Reactivity	Human; Mouse
Applications	WB
Gene Name	SYTL1 SLP1 SB146
Protein Name	SYTL1
Immunogen	Synthesized peptide derived from human SYTL1 AA range: 333-383
Specificity	This antibody detects endogenous levels of SYTL1 at Human/Mouse
Formulation	Liquid in PBS containing 50% glycerol, 0.5% BSA and 0.101% sodium azide.
Source	Polyclonal, Rabbit,IgG
Purification	The antibody was affinity-purified from rabbit serum by affinity-chromatography using specific immunogen.
Dilution	WB 1:500-2000
Concentration	1 mg/ml
Purity	≥90%
Storage Stability	-20°C/1 year
Synonyms	Synaptotagmin-like protein 1 (Exophilin-7) (Protein JFC1)
Observed Band	60kD
Cell Pathway	Cell membrane ; Peripheral membrane protein ; Cytoplasmic side . Peripheral membrane protein tightly bound to the cytoplasmic side of cellular membranes.
Tissue Specificity	Highly expressed in bone marrow and lymphoid tissues. Detected at lower levels in cerebellum, occipital lobe, prostate, stomach, kidney, appendix, lung and trachea. Expressed in cytotoxic T-lymphocytes (CTL).
Function	function:May act as Rab effector protein and play a role in vesicle trafficking (By similarity). Binds phosphatidylinositol 3,4,5-triphosphate.,similarity:Contains 1 C2 domain.,similarity:Contains 1 RabBD (Rab-binding) domain.,similarity:Contains 2 C2 domains.,subcellular location:Peripheral membrane protein tightly bound to the cytoplasmic side of cellular membranes.,subunit:Monomer. Binds NRXN1. Binds RAB27A that has been activated by GTP-binding via its N-terminus (By similarity). Binds NCF2.,tissue specificity:Highly expressed in bone marrow and lymphoid tissues. Detected at lower levels in cerebellum, occipital lobe, prostate, stomach, kidney, appendix, lung and trachea.,

Nanjing BYabscience technology Co.,Ltd



Background

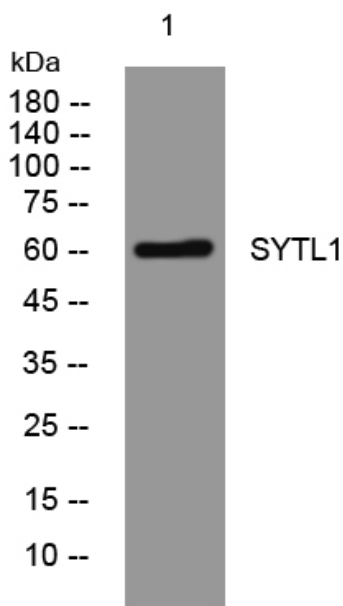
matters needing attention

Avoid repeated freezing and thawing!

Usage suggestions

This product can be used in immunological reaction related experiments. For more information, please consult technical personnel.

Products Images



Western blot analysis of lysates from Jarkat cells,
primary antibody was diluted at 1:1000, 4°over night