



MER34 rabbit pAb

Catalog No	BYab-07995
Isotype	IgG
Reactivity	Human;Rat;Mouse;
Applications	WB
Gene Name	ERVMER34-1 LP9056
Protein Name	MER34
Immunogen	Synthesized peptide derived from human MER34 AA range: 391-441
Specificity	This antibody detects endogenous levels of MER34 at Human
Formulation	Liquid in PBS containing 50% glycerol, 0.5% BSA and 0.109% sodium azide.
Source	Polyclonal, Rabbit,IgG
Purification	The antibody was affinity-purified from rabbit serum by affinity-chromatography using specific immunogen.
Dilution	WB 1:500-2000
Concentration	1 mg/ml
Purity	≥90%
Storage Stability	-20°C/1 year
Synonyms	HERV-MER_4q12 provirus ancestral Env polyprotein (Endogenous retrovirus group MER34 member 1)
Observed Band	60kD
Cell Pathway	[Endogenous retroviral envelope protein HEMO]: Cell membrane ; Single-pass type I membrane protein . This uncleaved form present at the cell surface represents the major form (PubMed:28739914). . ; [Endogenous retroviral envelope protein HEMO, secreted form]: Secreted . This secreted form, which is released in the extracellular medium following cleavage, constitutes a minor form (PubMed:28739914). .
Tissue Specificity	Expressed at high level in the placenta and stem cells (at protein level) (PubMed:28739914). Also expressed in the kidney but at a lower level (PubMed:28739914). Endogenous retroviral envelope protein HEMO, secreted form: Present in the blood of pregnant women (at protein level) (PubMed:28739914).
Function	function:Retroviral envelope proteins mediate receptor recognition and membrane fusion during early infection. Endogenous envelope proteins may have kept, lost or modified their original function during evolution.,similarity:Belongs to the gamma type-C retroviral envelope protein family.,

Nanjing BYabscience technology Co.,Ltd



Background

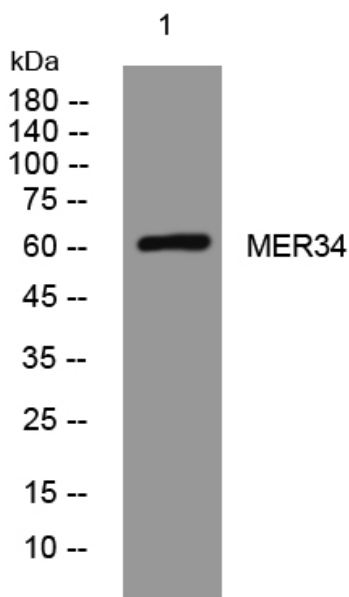
matters needing attention

Avoid repeated freezing and thawing!

Usage suggestions

This product can be used in immunological reaction related experiments. For more information, please consult technical personnel.

Products Images



Western blot analysis of lysates from HeLa cells, primary antibody was diluted at 1:1000, 4°over night