



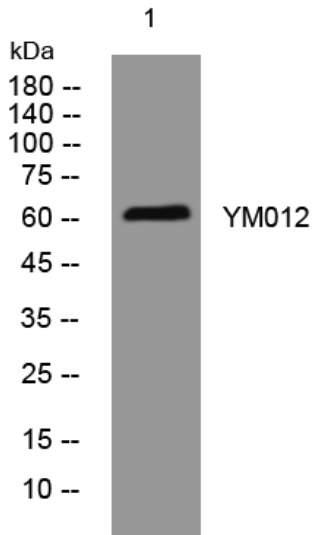
YM012 rabbit pAb

Catalog No	BYab-08008
Isotype	IgG
Reactivity	Human;Rat;Mouse;
Applications	WB
Gene Name	
Protein Name	YM012
Immunogen	Synthesized peptide derived from human YM012 AA range: 433-483
Specificity	This antibody detects endogenous levels of YM012 at Human
Formulation	Liquid in PBS containing 50% glycerol, 0.5% BSA and 0.122% sodium azide.
Source	Polyclonal, Rabbit,IgG
Purification	The antibody was affinity-purified from rabbit serum by affinity-chromatography using specific immunogen.
Dilution	WB 1:500-2000
Concentration	1 mg/ml
Purity	≥90%
Storage Stability	-20°C/1 year
Synonyms	Uncharacterized protein DKFZp434B061
Observed Band	60kD
Cell Pathway	extracellular space,
Tissue Specificity	
Function	
Background	
matters needing attention	Avoid repeated freezing and thawing!
Usage suggestions	This product can be used in immunological reaction related experiments. For more information, please consult technical personnel.

Nanjing BYabscience technology Co.,Ltd



Products Images



Western blot analysis of lysates from K562 cells,
primary antibody was diluted at 1:1000, 4° over night