



ZN268 rabbit pAb

Catalog No	BYab-08081
Isotype	IgG
Reactivity	Human;Rat;Mouse;
Applications	WB
Gene Name	ZNF268
Protein Name	ZN268
Immunogen	Synthesized peptide derived from human ZN268 AA range: 201-251
Specificity	This antibody detects endogenous levels of ZN268 at Human
Formulation	Liquid in PBS containing 50% glycerol, 0.5% BSA and 0.196% sodium azide.
Source	Polyclonal, Rabbit,IgG
Purification	The antibody was affinity-purified from rabbit serum by affinity-chromatography using specific immunogen.
Dilution	WB 1:500-2000
Concentration	1 mg/ml
Purity	≥90%
Storage Stability	-20°C/1 year
Synonyms	Zinc finger protein 268 (Zinc finger protein HZF3)
Observed Band	105kD
Cell Pathway	[Isoform 1]: Nucleus .; [Isoform 2]: Nucleus . Cytoplasm .
Tissue Specificity	Overexpressed in ovarian cancer tissues compared to normal ovarian tissues. Isoform 1 and isoform 2 are expressed in squamous epithelium tissues. Isoform 2 is overexpressed in squamous cervical cancer (at protein level). Expressed in blood cells. Isoform 1 is expressed in pancreas, lung, skeletal muscle, heart, placenta, liver, kidney and brain. Isoform 2 expressed in chronic lymphocytic leukemia (CLL) and several tumor cell lines. Isoform 3 is expressed in several tumor cells. Isoform 5 is expressed in fetal liver and several tumor cells. Isoform 6 is weakly expressed in brain, lung and small intestine and in several tumor cells. Isoform 7 is expressed in fetal liver and several tumor cells.
Function	developmental stage:Highly expressed in 3- to 5-week-old embryos.,function:May be involved in transcriptional regulation.,similarity:Belongs to the krueppel C2H2-type zinc-finger protein family.,similarity:Contains 1 KRAB domain.,similarity:Contains 24 C2H2-type zinc fingers.,

Nanjing BYabscience technology Co.,Ltd



Background

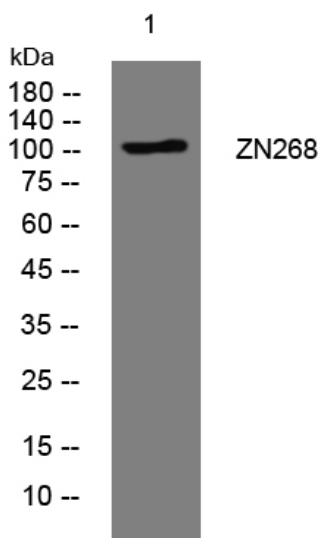
matters needing attention

Avoid repeated freezing and thawing!

Usage suggestions

This product can be used in immunological reaction related experiments. For more information, please consult technical personnel.

Products Images



Western blot analysis of lysates from AD293 cells, primary antibody was diluted at 1:1000, 4°over night