



AP1B1 rabbit pAb

| | |
|---------------------------|--|
| Catalog No | BYab-08086 |
| Isotype | IgG |
| Reactivity | Human; Mouse;Rat |
| Applications | WB |
| Gene Name | AP1B1 ADTB1 BAM22 CLAPB2 |
| Protein Name | AP1B1 |
| Immunogen | Synthesized peptide derived from human AP1B1 AA range: 215-265 |
| Specificity | This antibody detects endogenous levels of AP1B1 at Human/Mouse/Rat |
| Formulation | Liquid in PBS containing 50% glycerol, 0.5% BSA and 0.201% sodium azide. |
| Source | Polyclonal, Rabbit,IgG |
| Purification | The antibody was affinity-purified from rabbit serum by affinity-chromatography using specific immunogen. |
| Dilution | WB 1:500-2000 |
| Concentration | 1 mg/ml |
| Purity | ≥90% |
| Storage Stability | -20°C/1 year |
| Synonyms | AP-1 complex subunit beta-1 (Adapter-related protein complex 1 subunit beta-1) (Adaptor protein complex AP-1 subunit beta-1) (Beta-1-adaptin) (Beta-adaptin 1) (Clathrin assembly protein complex 1 beta large chain) (Golgi adaptor HA1/AP1 adaptin beta subunit) |
| Observed Band | 105kD |
| Cell Pathway | Golgi apparatus. Cytoplasmic vesicle, clathrin-coated vesicle membrane; Peripheral membrane protein; Cytoplasmic side. Component of the coat surrounding the cytoplasmic face of coated vesicles located at the Golgi complex. |
| Tissue Specificity | Widely expressed. |
| Function | disease:Deletion of the AP1B1 gene may play a role in the tumorigenesis of meningiomas.;function:Subunit of clathrin-associated adaptor protein complex 1 that plays a role in protein sorting in the late-Golgi/trans-Golgi network (TGN) and/or endosomes. The AP complexes mediate both the recruitment of clathrin to membranes and the recognition of sorting signals within the cytosolic tails of transmembrane cargo molecules.;similarity:Belongs to the adaptor complexes large subunit family.;subcellular location:Component of the coat surrounding the |

Nanjing BYabscience technology Co.,Ltd



cytoplasmic face of coated vesicles located at the Golgi complex.,subunit:Adaptor protein complex 1 (AP-1) is an heterotetramer composed of two large adaptins (gamma-type subunit AP1G1 and beta-type subunit AP1B1), a medium adaptin (mu-type subunit AP1M1 or AP1M2) and a small adaptin (sigma-type subunit AP1S1 or AP1S2 or AP1S3).,tissue specificity:W

Background

Adaptor protein complex 1 is found at the cytoplasmic face of coated vesicles located at the Golgi complex, where it mediates both the recruitment of clathrin to the membrane and the recognition of sorting signals within the cytosolic tails of transmembrane receptors. This complex is a heterotetramer composed of two large, one medium, and one small adaptin subunit. The protein encoded by this gene serves as one of the large subunits of this complex and is a member of the adaptin protein family. This gene is a candidate meningioma gene. Alternative splicing results in multiple transcript variants. [provided by RefSeq, Oct 2009],

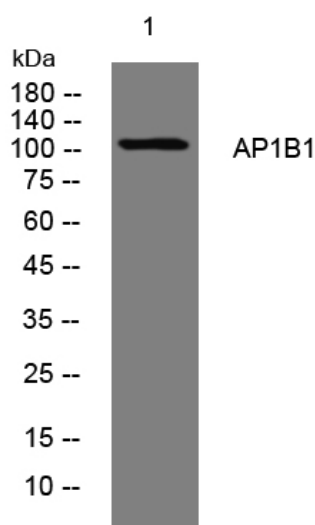
matters needing attention

Avoid repeated freezing and thawing!

Usage suggestions

This product can be used in immunological reaction related experiments. For more information, please consult technical personnel.

Products Images



Western blot analysis of lysates from HEK293 cells, primary antibody was diluted at 1:1000, 4° over night