



GTD2B rabbit pAb

Catalog No	BYab-08088
Isotype	IgG
Reactivity	Human;Rat;Mouse;
Applications	WB
Gene Name	GTF2IRD2B
Protein Name	GTD2B
Immunogen	Synthesized peptide derived from human GTD2B AA range: 730-780
Specificity	This antibody detects endogenous levels of GTD2B at Human
Formulation	Liquid in PBS containing 50% glycerol, 0.5% BSA and 0.203% sodium azide.
Source	Polyclonal, Rabbit,IgG
Purification	The antibody was affinity-purified from rabbit serum by affinity-chromatography using specific immunogen.
Dilution	WB 1:500-2000
Concentration	1 mg/ml
Purity	≥90%
Storage Stability	-20°C/1 year
Synonyms	General transcription factor II-I repeat domain-containing protein 2B (GTF2I repeat domain-containing protein 2B) (Transcription factor GTF2IRD2-beta)
Observed Band	105kD
Cell Pathway	Nucleus.
Tissue Specificity	Ubiquitous.
Function	miscellaneous:GTF2IRD2B is a gene located in the Williams-Beuren syndrome (WBS) critical region. WBS is the result of a chromosomal microdeletion 7q11.23 thought to arise as a consequence of unequal crossing over between highly homologous low-copy repeat sequences flanking the deleted region. Since GTF2IRD2B maps within this duplicated region, more than one copy of the gene was identified. WBS is a rare developmental disorder characterized by distinctive dysmorphic face, mild growth retardation, supraaortic stenosis and infantile hypercalcemia.,similarity:Belongs to the TFII-I family.,similarity:Contains 2 GTF2I-like repeats.,tissue specificity:Ubiquitous.,

Nanjing BYabscience technology Co.,Ltd

网址: www.njbybio.com

官方热线: 025-5229-8998

监督电话: 15950492658



Background

This gene encodes a glycosylated phosphoprotein with a leucine zipper motif, two helix-loop-helix motifs (1 repeats) that are similar to domains found in the TFII-I family of transcription factors, one CHARLIE8 transposable element-like sequence, and a BED zinc finger. This gene lies within a region that is deleted in Williams-Beuren syndrome. Alternatively spliced variants which encode different protein isoforms have been described; however, not all variants have been fully characterized. [provided by RefSeq, Jul 2008],

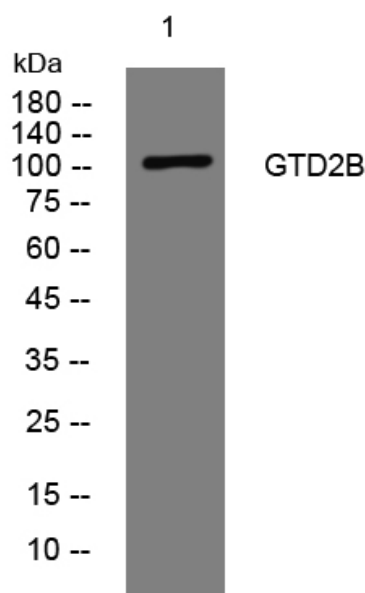
matters needing attention

Avoid repeated freezing and thawing!

Usage suggestions

This product can be used in immunological reaction related experiments. For more information, please consult technical personnel.

Products Images



Western blot analysis of lysates from MCF-7 cells, primary antibody was diluted at 1:1000, 4° over night