



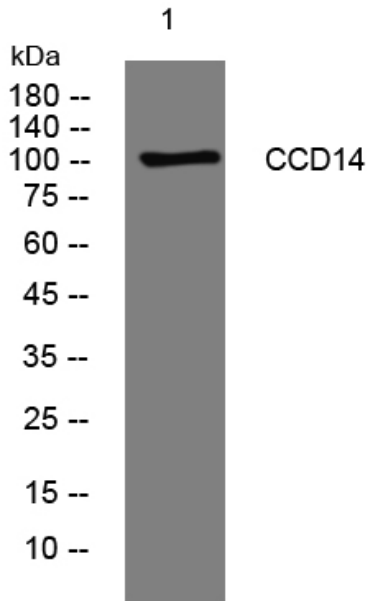
CCD14 rabbit pAb

Catalog No	BYab-08108
Isotype	IgG
Reactivity	Human; Mouse
Applications	WB
Gene Name	CCDC14
Protein Name	CCD14
Immunogen	Synthesized peptide derived from human CCD14 AA range: 337-387
Specificity	This antibody detects endogenous levels of CCD14 at Human/Mouse
Formulation	Liquid in PBS containing 50% glycerol, 0.5% BSA and 0.223% sodium azide.
Source	Polyclonal, Rabbit,IgG
Purification	The antibody was affinity-purified from rabbit serum by affinity-chromatography using specific immunogen.
Dilution	WB 1:500-2000
Concentration	1 mg/ml
Purity	≥90%
Storage Stability	-20°C/1 year
Synonyms	Coiled-coil domain-containing protein 14
Observed Band	105kD
Cell Pathway	Cytoplasm, cytoskeleton, microtubule organizing center, centrosome, centriolar satellite . Colocalizes with PCM1 at centriolar satellites throughout the cell cycle. .
Tissue Specificity	Bone marrow,Kidney,Retina,Teratocarcinoma,Testis,
Function	caution:The sequence shown here is derived from an Ensembl automatic analysis pipeline and should be considered as preliminary data.,
Background	
matters needing attention	Avoid repeated freezing and thawing!
Usage suggestions	This product can be used in immunological reaction related experiments. For more information, please consult technical personnel.

Nanjing BYabscience technology Co.,Ltd



Products Images



Western blot analysis of lysates from 293T cells,
primary antibody was diluted at 1:1000, 4° over night