



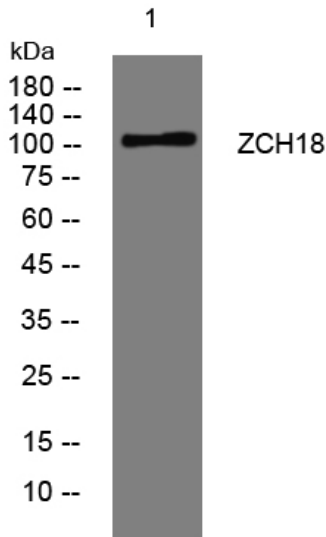
ZCH18 rabbit pAb

Catalog No	BYab-08112
Isotype	IgG
Reactivity	Human; Mouse;Rat
Applications	WB
Gene Name	ZC3H18 NHN1
Protein Name	ZCH18
Immunogen	Synthesized peptide derived from human ZCH18 AA range: 39-89
Specificity	This antibody detects endogenous levels of ZCH18 at Human/Mouse/Rat
Formulation	Liquid in PBS containing 50% glycerol, 0.5% BSA and 0.227% sodium azide.
Source	Polyclonal, Rabbit,IgG
Purification	The antibody was affinity-purified from rabbit serum by affinity-chromatography using specific immunogen.
Dilution	WB 1:500-2000
Concentration	1 mg/ml
Purity	≥90%
Storage Stability	-20°C/1 year
Synonyms	Zinc finger CCCH domain-containing protein 18 (Nuclear protein NHN1)
Observed Band	105kD
Cell Pathway	Nucleus .
Tissue Specificity	Brain,Cervix,Epithelium,Spleen,Testis,
Function	similarity:Contains 1 C3H1-type zinc finger.,
Background	
matters needing attention	Avoid repeated freezing and thawing!
Usage suggestions	This product can be used in immunological reaction related experiments. For more information, please consult technical personnel.

Nanjing BYabscience technology Co.,Ltd



Products Images



Western blot analysis of lysates from DU145 cells,
primary antibody was diluted at 1:1000, 4° over night