



CC146 rabbit pAb

Catalog No	BYab-08118
Isotype	IgG
Reactivity	Human;Rat
Applications	WB
Gene Name	CCDC146 KIAA1505
Protein Name	CC146
Immunogen	Synthesized peptide derived from human CC146 AA range: 765-815
Specificity	This antibody detects endogenous levels of CC146 at Human/Rat
Formulation	Liquid in PBS containing 50% glycerol, 0.5% BSA and 0.233% sodium azide.
Source	Polyclonal, Rabbit,IgG
Purification	The antibody was affinity-purified from rabbit serum by affinity-chromatography using specific immunogen.
Dilution	WB 1:500-2000
Concentration	1 mg/ml
Purity	≥90%
Storage Stability	-20°C/1 year
Synonyms	Coiled-coil domain-containing protein 146
Observed Band	105kD
Cell Pathway	Cytoplasm, cytoskeleton, microtubule organizing center, centrosome, centriole . Localized to only one centriole identified as the mother centriole by co-staining with CEP164. .
Tissue Specificity	Ovary,Skeletal muscle,Testis,
Function	
Background	
matters needing attention	Avoid repeated freezing and thawing!

Nanjing BYabs science technology Co.,Ltd

网址: www.njbybio.com

官方热线: 025-5229-8998

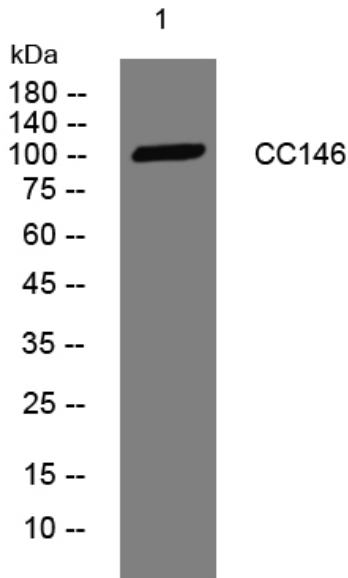
监督电话: 15950492658



Usage suggestions

This product can be used in immunological reaction related experiments. For more information, please consult technical personnel.

Products Images



Western blot analysis of lysates from KB cells, primary antibody was diluted at 1:1000, 4° over night