



CE112 rabbit pAb

Catalog No	BYab-08119
Isotype	IgG
Reactivity	Human; Mouse
Applications	WB
Gene Name	CEP112 CCDC46
Protein Name	CE112
Immunogen	Synthesized peptide derived from human CE112 AA range: 475-525
Specificity	This antibody detects endogenous levels of CE112 at Human/Mouse
Formulation	Liquid in PBS containing 50% glycerol, 0.5% BSA and 0.234% sodium azide.
Source	Polyclonal, Rabbit,IgG
Purification	The antibody was affinity-purified from rabbit serum by affinity-chromatography using specific immunogen.
Dilution	WB 1:500-2000
Concentration	1 mg/ml
Purity	≥90%
Storage Stability	-20°C/1 year
Synonyms	Centrosomal protein of 112 kDa (Coiled-coil domain-containing protein 46)
Observed Band	105kD
Cell Pathway	Cytoplasm, cytoskeleton, microtubule organizing center, centrosome . Localizes around spindle poles in some cells. .
Tissue Specificity	Lung,PCR rescued clones,Testis,Uterus,
Function	sequence caution:Contaminating sequence. Potential poly-A sequence starting in position 563.,
Background	This gene encodes a coiled-coil domain containing protein that belongs to the cell division control protein 42 effector protein family. In neurons, it localizes to the cytoplasm of dendrites and is also enriched in the nucleus where it interacts with the RNA polymerase III transcriptional repressor Maf1 to regulate gamma-aminobutyric acid A receptor surface expression. In addition, the protein has been identified as a component of the human centrosome. Alternative splicing results in multiple transcript variants. [provided by RefSeq, Nov 2014],

Nanjing BYabs science technology Co.,Ltd

网址: www.njbybio.com

官方热线: 025-5229-8998

监督电话: 15950492658



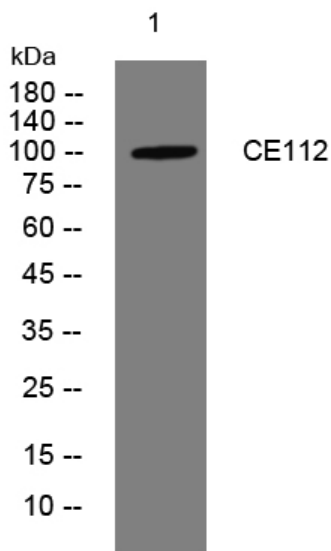
matters needing attention

Avoid repeated freezing and thawing!

Usage suggestions

This product can be used in immunological reaction related experiments. For more information, please consult technical personnel.

Products Images



Western blot analysis of lysates from HpeG2 cells, primary antibody was diluted at 1:1000, 4° over night