



# DSE rabbit pAb

<b>Catalog No</b>	BYab-08134
<b>Isotype</b>	IgG
<b>Reactivity</b>	Human; Mouse
<b>Applications</b>	WB
<b>Gene Name</b>	DSE SART2
<b>Protein Name</b>	DSE
<b>Immunogen</b>	Synthesized peptide derived from human DSE AA range: 164-214
<b>Specificity</b>	This antibody detects endogenous levels of DSE at Human/Mouse
<b>Formulation</b>	Liquid in PBS containing 50% glycerol, 0.5% BSA and 0.249% sodium azide.
<b>Source</b>	Polyclonal, Rabbit,IgG
<b>Purification</b>	The antibody was affinity-purified from rabbit serum by affinity-chromatography using specific immunogen.
<b>Dilution</b>	WB 1:500-2000
<b>Concentration</b>	1 mg/ml
<b>Purity</b>	≥90%
<b>Storage Stability</b>	-20°C/1 year
<b>Synonyms</b>	Dermatan-sulfate epimerase (DS epimerase) (EC 5.1.3.19) (Chondroitin-glucuronate 5-epimerase) (Squamous cell carcinoma antigen recognized by T-cells 2) (SART-2)
<b>Observed Band</b>	105kD
<b>Cell Pathway</b>	Endoplasmic reticulum membrane ; Multi-pass membrane protein . Golgi apparatus membrane ; Multi-pass membrane protein . Cytoplasmic vesicle membrane ; Multi-pass membrane protein . Microsome membrane ; Multi-pass membrane protein .
<b>Tissue Specificity</b>	Ubiquitously expressed with higher expression in kidney and ovary and lower expression in brain, colon and thymus. Also expressed in renal cell carcinomas, brain tumors, and in a part of melanomas and adenocarcinomas from organs other than the breast. Expressed in squamous cell carcinomas (SCC), glioma, and some adenocarcinoma cell lines, but not in breast cancer cell lines or any normal tissues (at protein level).
<b>Function</b>	catalytic activity:Chondroitin D-glucuronate = dermatan L-iduronate.,function:Converts D-glucuronic acid to L-iduronic acid (IdoUA) residues.,pathway:Glycan metabolism; chondroitin sulfate

**Nanjing BYabscience technology Co.,Ltd**



biosynthesis.,pathway:Glycan metabolism; heparan sulfate biosynthesis.,similarity:Belongs to the dermatan-sulfate isomerase family.,tissue specificity:Ubiquitously expressed with higher expression in kidney and ovary and lower expression in brain, colon and thymus. Also expressed in renal cell carcinomas, brain tumors, and in a part of melanomas and adenocarcinomas from organs other than the breast. Expressed in squamous cell carcinomas (SCC), glioma, and some adenocarcinoma cell lines, but not in breast cancer cell lines or any normal tissues (at protein level).,

#### Background

The protein encoded by this gene is a tumor-rejection antigen. It is localized to the endoplasmic reticulum and functions to convert D-glucuronic acid to L-iduronic acid during the biosynthesis of dermatan sulfate. This antigen possesses tumor epitopes capable of inducing HLA-A24-restricted and tumor-specific cytotoxic T lymphocytes in cancer patients and may be useful for specific immunotherapy. Mutations in this gene cause inmusculocontractural Ehlers-Danlos syndrome. Alternative splicing results in multiple transcript variants. A related pseudogene has been identified on chromosome 9, and a paralogous gene exists on chromosome 18. [provided by RefSeq, Apr 2016],

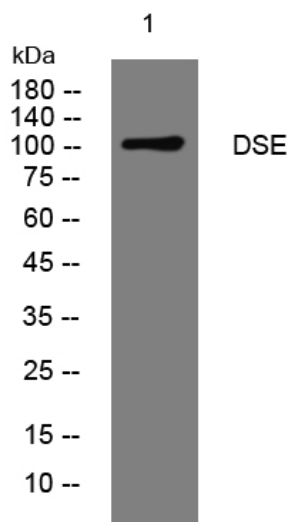
#### matters needing attention

Avoid repeated freezing and thawing!

#### Usage suggestions

This product can be used in immunological reaction related experiments. For more information, please consult technical personnel.

### Products Images



Western blot analysis of lysates from 293T cells, primary antibody was diluted at 1:1000, 4° over night

**Nanjing BYabscience technology Co.,Ltd**

网址: [www.njbybio.com](http://www.njbybio.com)

官方热线: 025-5229-8998

监督电话: 15950492658