



# POK3 rabbit pAb

Catalog No	BYab-08137
Isotype	IgG
Reactivity	Human;Rat;Mouse;
Applications	WB
Gene Name	ERVK6
Protein Name	POK3
Immunogen	Synthesized peptide derived from human POK3 AA range: 813-863
Specificity	This antibody detects endogenous levels of POK3 at Human
Formulation	Liquid in PBS containing 50% glycerol, 0.5% BSA and 0.252% sodium azide.
Source	Polyclonal, Rabbit,IgG
Purification	The antibody was affinity-purified from rabbit serum by affinity-chromatography using specific immunogen.
Dilution	WB 1:500-2000
Concentration	1 mg/ml
Purity	≥90%
Storage Stability	-20°C/1 year
Synonyms	HERV-K_19q12 provirus ancestral Pol protein (HERV-K(C19) Pol protein) [Includes: Reverse transcriptase (RT) (EC 2.7.7.49); Ribonuclease H (RNase H) (EC 3.1.26.4); Integrase (IN)]
Observed Band	105kD
Cell Pathway	
Tissue Specificity	
Function	
Background	
matters needing attention	Avoid repeated freezing and thawing!

Nanjing BYabscience technology Co.,Ltd

网址: [www.njbybio.com](http://www.njbybio.com)

官方热线: 025-5229-8998

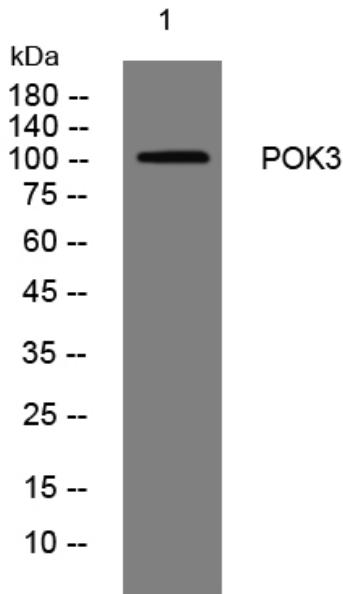
监督电话: 15950492658



### Usage suggestions

This product can be used in immunological reaction related experiments. For more information, please consult technical personnel.

### Products Images



Western blot analysis of lysates from HeLa cells,  
primary antibody was diluted at 1:1000, 4° over night