



INT7 rabbit pAb

Catalog No	BYab-08143
Isotype	IgG
Reactivity	Human; Mouse
Applications	WB
Gene Name	INTS7 C1orf73
Protein Name	INT7
Immunogen	Synthesized peptide derived from human INT7 AA range: 364-414
Specificity	This antibody detects endogenous levels of INT7 at Human/Mouse
Formulation	Liquid in PBS containing 50% glycerol, 0.5% BSA and 0.258% sodium azide.
Source	Polyclonal, Rabbit,IgG
Purification	The antibody was affinity-purified from rabbit serum by affinity-chromatography using specific immunogen.
Dilution	WB 1:500-2000
Concentration	1 mg/ml
Purity	≥90%
Storage Stability	-20°C/1 year
Synonyms	Integrator complex subunit 7 (Int7)
Observed Band	105kD
Cell Pathway	Nucleus . Chromosome . Cytoplasm . Localizes to sites of DNA damage in a H2AX-independent manner.
Tissue Specificity	Skin,Testis,Uterus,
Function	function:Component of the Integrator complex, a complex involved in the small nuclear RNAs (snRNA) U1 and U2 transcription and in their 3'-box-dependent processing. The Integrator complex is associated with the C-terminal domain (CTD) of RNA polymerase II largest subunit (POLR2A) and is recruited to the U1 and U2 snRNAs genes.,sequence caution:Translated as Cys.,similarity:Belongs to the Integrator subunit 7 family.,subunit:Belongs to the multiprotein complex Integrator, at least composed of INTS1, INTS2, INTS3, INTS4, INTS5, INTS6, INTS7, INTS8, INTS9/RC74, INTS10, CPSF3L/INTS11 and INTS12.,
Background	This gene encodes a subunit of the integrator complex. The integrator complex associates with the C-terminal domain of RNA polymerase II and mediates 3'-end processing of the small nuclear RNAs U1 and U2. Alternatively

Nanjing BYabscience technology Co.,Ltd



spliced transcript variants encoding multiple isoforms have been observed for this gene. [provided by RefSeq, Dec 2010],

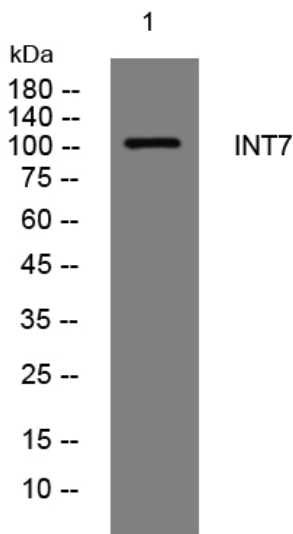
matters needing attention

Avoid repeated freezing and thawing!

Usage suggestions

This product can be used in immunological reaction related experiments. For more information, please consult technical personnel.

Products Images



Western blot analysis of lysates from SH-SY5Y cells, primary antibody was diluted at 1:1000, 4°over night