



GMIP rabbit pAb

Catalog No	BYab-08167
Isotype	IgG
Reactivity	Human; Mouse
Applications	WB
Gene Name	GMIP
Protein Name	GMIP
Immunogen	Synthesized peptide derived from human GMIP AA range: 421-471
Specificity	This antibody detects endogenous levels of GMIP at Human/Mouse
Formulation	Liquid in PBS containing 50% glycerol, 0.5% BSA and 0.282% sodium azide.
Source	Polyclonal, Rabbit,IgG
Purification	The antibody was affinity-purified from rabbit serum by affinity-chromatography using specific immunogen.
Dilution	WB 1:500-2000
Concentration	1 mg/ml
Purity	≥90%
Storage Stability	-20°C/1 year
Synonyms	GEM-interacting protein (GMIP)
Observed Band	105kD
Cell Pathway	intracellular,cytosol,
Tissue Specificity	Brain,Leukemia,Platelet,
Function	function:Stimulates, in vitro and in vivo, the GTPase activity of RhoA.,similarity:Contains 1 phorbol-ester/DAG-type zinc finger.,similarity:Contains 1 Rho-GAP domain.,subunit:Interacts with GEM through its N-terminal.,
Background	This gene encodes a member of the ARHGAP family of Rho/Rac/Cdc42-like GTPase activating proteins. The encoded protein interacts with the Ras-related protein Gem through its N-terminal domain. Separately, it interacts with RhoA through a RhoGAP domain, and stimulates RhoA-dependent GTPase activity. Alternative splicing results in multiple transcript variants. [provided by RefSeq, Jan 2014],

Nanjing BYabs science technology Co.,Ltd



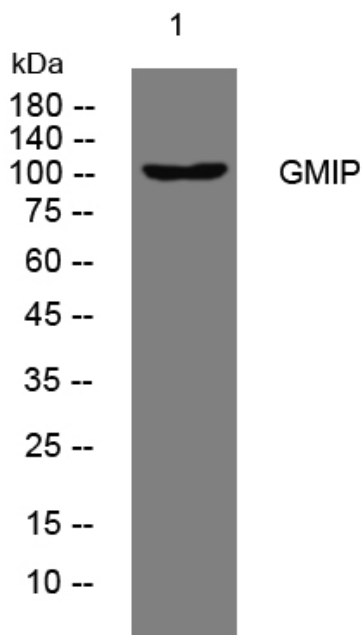
matters needing attention

Avoid repeated freezing and thawing!

Usage suggestions

This product can be used in immunological reaction related experiments. For more information, please consult technical personnel.

Products Images



Western blot analysis of lysates from SW480 cells, primary antibody was diluted at 1:1000, 4° over night