



# CEP85 rabbit pAb

<b>Catalog No</b>	BYab-08180
<b>Isotype</b>	IgG
<b>Reactivity</b>	Human; Mouse
<b>Applications</b>	WB
<b>Gene Name</b>	CEP85 CCDC21
<b>Protein Name</b>	CEP85
<b>Immunogen</b>	Synthesized peptide derived from human CEP85 AA range: 267-317
<b>Specificity</b>	This antibody detects endogenous levels of CEP85 at Human/Mouse
<b>Formulation</b>	Liquid in PBS containing 50% glycerol, 0.5% BSA and 0.295% sodium azide.
<b>Source</b>	Polyclonal, Rabbit,IgG
<b>Purification</b>	The antibody was affinity-purified from rabbit serum by affinity-chromatography using specific immunogen.
<b>Dilution</b>	WB 1:500-2000
<b>Concentration</b>	1 mg/ml
<b>Purity</b>	≥90%
<b>Storage Stability</b>	-20°C/1 year
<b>Synonyms</b>	Centrosomal protein of 85 kDa (Coiled-coil domain-containing protein 21)
<b>Observed Band</b>	85kD
<b>Cell Pathway</b>	Cytoplasm, cytoskeleton, microtubule organizing center, centrosome . Cytoplasm, cytoskeleton, spindle pole . Nucleus, nucleolus . Localizes to centrosomes and nucleolus in interphase. Upon entry into mitosis, relocates from nucleolus and accumulates at spindle poles (PubMed:21399614). Associated with the pericentriolar material. Localizes to centrosomes at a low level in G1 phase and a slightly increased level in S phase, with gradually elevated levels during G2 phase. The levels at centrosomes further increase at G2/M, reaching a peak at spindle poles at early mitotic stages and remain high until the end of anaphase (PubMed:26220856). .
<b>Tissue Specificity</b>	Hepatoma,Placenta,Retinoblastoma,Testis,
<b>Function</b>	similarity:Belongs to the CCDC21 family.,
<b>Background</b>	This gene encodes a protein that belongs to the centrosome-associated family of proteins. The centrosome is a subcellular organelle in the animal cell that

**Nanjing BYabscience technology Co.,Ltd**



functions as a microtubule organizing center and is involved in cell-cycle progression. Alternate splicing results in multiple transcript variants. [provided by RefSeq, Jul 2013],

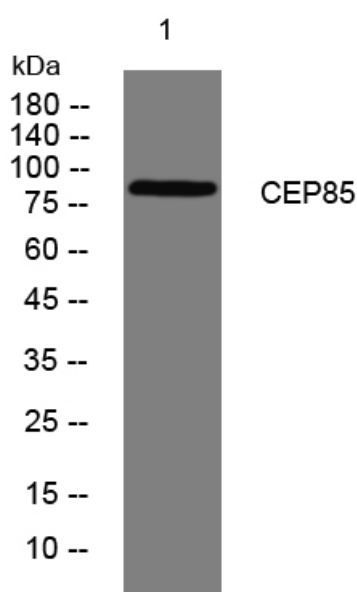
**matters needing attention**

Avoid repeated freezing and thawing!

**Usage suggestions**

This product can be used in immunological reaction related experiments. For more information, please consult technical personnel.

## Products Images



Western blot analysis of lysates from A549 cells, primary antibody was diluted at 1:1000, 4° over night

**Nanjing BYabs science technology Co.,Ltd**

网址: [www.njbybio.com](http://www.njbybio.com)

官方热线: 025-5229-8998

监督电话: 15950492658