



# SATB1 rabbit pAb

<b>Catalog No</b>	BYab-08187
<b>Isotype</b>	IgG
<b>Reactivity</b>	Human; Mouse
<b>Applications</b>	WB
<b>Gene Name</b>	SATB1
<b>Protein Name</b>	SATB1
<b>Immunogen</b>	Synthesized peptide derived from human SATB1 AA range: 343-393
<b>Specificity</b>	This antibody detects endogenous levels of SATB1 at Human/Mouse
<b>Formulation</b>	Liquid in PBS containing 50% glycerol, 0.5% BSA and 0.302% sodium azide.
<b>Source</b>	Polyclonal, Rabbit,IgG
<b>Purification</b>	The antibody was affinity-purified from rabbit serum by affinity-chromatography using specific immunogen.
<b>Dilution</b>	WB 1:500-2000
<b>Concentration</b>	1 mg/ml
<b>Purity</b>	≥90%
<b>Storage Stability</b>	-20°C/1 year
<b>Synonyms</b>	DNA-binding protein SATB1 (Special AT-rich sequence-binding protein 1)
<b>Observed Band</b>	85kD
<b>Cell Pathway</b>	Nucleus matrix . Nucleus, PML body . Organized into a cage-like network anchoring loops of heterochromatin and tethering specialized DNA sequences (PubMed:12692553). When sumoylated, localized in promyelocytic leukemia nuclear bodies (PML NBs) (PubMed:18408014). .
<b>Tissue Specificity</b>	Expressed predominantly in thymus.
<b>Function</b>	function: Binds to DNA at special AT-rich sequences at nuclear matrix- or scaffold-associated regions. Thought to recognize the sugar-phosphate structure of double-stranded DNA., PTM: Sumoylated., similarity: Belongs to the CUT homeobox family., similarity: Contains 1 homeobox DNA-binding domain., similarity: Contains 2 CUT DNA-binding domains., tissue specificity: Expressed predominantly in thymus.,
<b>Background</b>	This gene encodes a matrix protein which binds nuclear matrix and scaffold-associating DNAs through a unique nuclear architecture. The protein recruits chromatin-remodeling factors in order to regulate chromatin structure and

**Nanjing BYabscience technology Co.,Ltd**



gene expression. [provided by RefSeq, Apr 2016],

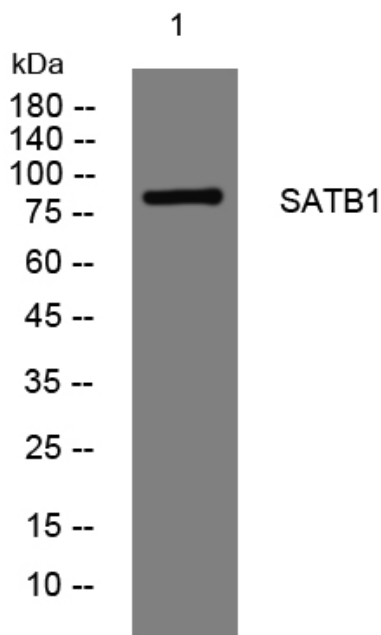
**matters needing attention**

Avoid repeated freezing and thawing!

**Usage suggestions**

This product can be used in immunological reaction related experiments. For more information, please consult technical personnel.

## Products Images



Western blot analysis of lysates from Jarkat cells,  
primary antibody was diluted at 1:1000, 4° over night

Nanjing BYabs science technology Co.,Ltd

网址: [www.njbybio.com](http://www.njbybio.com)

官方热线: 025-5229-8998

监督电话: 15950492658