



# Z585A rabbit pAb

Catalog No	BYab-08215
Isotype	IgG
Reactivity	Human;Rat;Mouse;
Applications	WB
Gene Name	ZNF585A
Protein Name	Z585A
Immunogen	Synthesized peptide derived from human Z585A AA range: 378-428
Specificity	This antibody detects endogenous levels of Z585A at Human
Formulation	Liquid in PBS containing 50% glycerol, 0.5% BSA and 0.330% sodium azide.
Source	Polyclonal, Rabbit,IgG
Purification	The antibody was affinity-purified from rabbit serum by affinity-chromatography using specific immunogen.
Dilution	WB 1:500-2000
Concentration	1 mg/ml
Purity	≥90%
Storage Stability	-20°C/1 year
Synonyms	Zinc finger protein 585A
Observed Band	85kD
Cell Pathway	Nucleus .
Tissue Specificity	Epithelium,Uterus,
Function	function:May be involved in transcriptional regulation.,similarity:Belongs to the krueppel C2H2-type zinc-finger protein family.,similarity:Contains 1 KRAB domain.,similarity:Contains 22 C2H2-type zinc fingers.,
Background	
matters needing attention	Avoid repeated freezing and thawing!

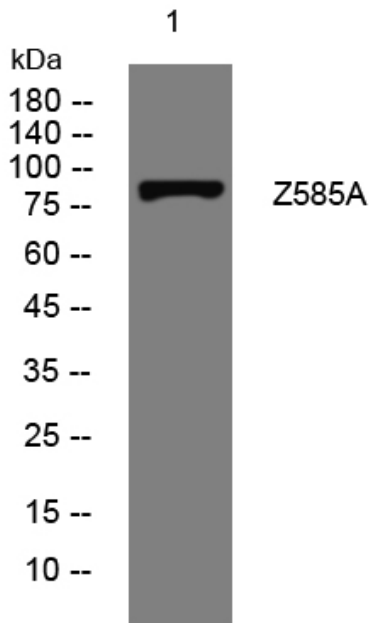
Nanjing BYabs science technology Co.,Ltd



### Usage suggestions

This product can be used in immunological reaction related experiments. For more information, please consult technical personnel.

### Products Images



Western blot analysis of lysates from MCF-7 cells, primary antibody was diluted at 1:1000, 4° over night