



DCBD2 rabbit pAb

Catalog No	BYab-08244
Isotype	IgG
Reactivity	Human; Mouse;Rat
Applications	WB
Gene Name	DCBLD2 CLCP1 ESDN
Protein Name	DCBD2
Immunogen	Synthesized peptide derived from human DCBD2 AA range: 142-192
Specificity	This antibody detects endogenous levels of DCBD2 at Human/Mouse/Rat
Formulation	Liquid in PBS containing 50% glycerol, 0.5% BSA and 0.359% sodium azide.
Source	Polyclonal, Rabbit,IgG
Purification	The antibody was affinity-purified from rabbit serum by affinity-chromatography using specific immunogen.
Dilution	WB 1:500-2000
Concentration	1 mg/ml
Purity	≥90%
Storage Stability	-20°C/1 year
Synonyms	Discoidin, CUB and LCCL domain-containing protein 2 (CUB, LCCL and coagulation factor V/VIII-homology domains protein 1) (Endothelial and smooth muscle cell-derived neuropilin-like protein)
Observed Band	85kD
Cell Pathway	Membrane ; Single-pass type I membrane protein .
Tissue Specificity	Highly expressed in testis, heart, skeletal muscle and also in cultured vascular smooth muscle cells.
Function	induction:Increased in lung cancers during the process of tumor progression.,similarity:Contains 1 CUB domain.,similarity:Contains 1 F5/8 type C domain.,similarity:Contains 1 LCCL domain.,tissue specificity:Highly expressed in testis, heart, skeletal muscle and also in cultured vascular smooth muscle cells.,
Background	

Nanjing BYabscience technology Co.,Ltd

网址: www.njbybio.com

官方热线: 025-5229-8998

监督电话: 15950492658



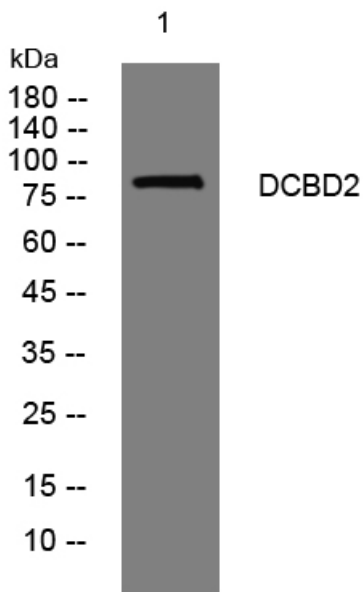
matters needing attention

Avoid repeated freezing and thawing!

Usage suggestions

This product can be used in immunological reaction related experiments. For more information, please consult technical personnel.

Products Images



Western blot analysis of lysates from HpeG2 cells, primary antibody was diluted at 1:1000, 4° over night