



SYTM rabbit pAb

Catalog No	BYab-08256
Isotype	IgG
Reactivity	Human; Mouse;Rat
Applications	WB
Gene Name	TARS2 TARSL1
Protein Name	SYTM
Immunogen	Synthesized peptide derived from human SYTM AA range: 242-292
Specificity	This antibody detects endogenous levels of SYTM at Human/Mouse/Rat
Formulation	Liquid in PBS containing 50% glycerol, 0.5% BSA and 0.02% sodium azide.
Source	Polyclonal, Rabbit,IgG
Purification	The antibody was affinity-purified from rabbit serum by affinity-chromatography using specific immunogen.
Dilution	WB 1: 500-2000
Concentration	1 mg/ml
Purity	≥90%
Storage Stability	-20°C/1 year
Synonyms	
Observed Band	
Cell Pathway	Mitochondrion matrix .
Tissue Specificity	
Function	catalytic activity:ATP + L-threonine + tRNA(Thr) = AMP + diphosphate + L-threonyl-tRNA(Thr).,similarity:Belongs to the class-II aminoacyl-tRNA synthetase family.,
Background	This gene encodes a member of the class-II aminoacyl-tRNA synthetase family. The encoded protein is a mitochondrial aminoacyl-tRNA synthetase. Alternative splicing results in multiple transcript variants. A related pseudogene has been identified on chromosome 4. [provided by RefSeq, Dec 2012],
matters needing attention	Avoid repeated freezing and thawing!

Nanjing BYabscience technology Co.,Ltd

网址: www.njbybio.com

官方热线: 025-5229-8998

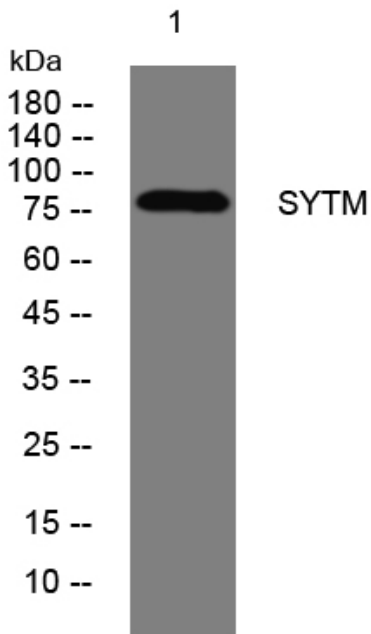
监督电话: 15950492658



Usage suggestions

This product can be used in immunological reaction related experiments. For more information, please consult technical personnel.

Products Images



Western blot analysis of lysates from DU145 cells,
primary antibody was diluted at 1:1000, 4° over night