



# OZF rabbit pAb

<b>Catalog No</b>	BYab-08260
<b>Isotype</b>	IgG
<b>Reactivity</b>	Human; Mouse
<b>Applications</b>	WB
<b>Gene Name</b>	ZNF146 OZF
<b>Protein Name</b>	OZF
<b>Immunogen</b>	Synthesized peptide derived from human OZF AA range: 3-53
<b>Specificity</b>	This antibody detects endogenous levels of OZF at Human/Mouse
<b>Formulation</b>	Liquid in PBS containing 50% glycerol, 0.5% BSA and 0.02% sodium azide.
<b>Source</b>	Polyclonal, Rabbit,IgG
<b>Purification</b>	The antibody was affinity-purified from rabbit serum by affinity-chromatography using specific immunogen.
<b>Dilution</b>	WB 1: 500-2000
<b>Concentration</b>	1 mg/ml
<b>Purity</b>	≥90%
<b>Storage Stability</b>	-20°C/1 year
<b>Synonyms</b>	
<b>Observed Band</b>	
<b>Cell Pathway</b>	Nucleus .
<b>Tissue Specificity</b>	Liver, skeletal and heart muscle, mammary cells. Very low levels in brain, lung, placenta and kidney. Strongly overexpressed in many pancreas and colorectal cancers. Increased gene copy numbers are detected in 3 of 12 tumor cell lines and 2 of 12 primary pancreatic carcinomas. Overexpressed in 80% of colorectal cancers.
<b>Function</b>	miscellaneous:Strongly overexpressed in many pancreas and colorectal cancers. Increased gene copy numbers are detected in 3 of 12 tumor cell lines and 2 of 12 primary pancreatic carcinomas. Overexpressed in 80% of colorectal cancers.,PTM:Sumoylated.,similarity:Belongs to the krueppel C2H2-type zinc-finger protein family.,similarity:Contains 10 C2H2-type zinc fingers.,subunit:Binds DNA. Interacts with SUMO conjugating enzyme UBC9/UBE2I. Interacts with the telomeric protein TERF2IP.,tissue specificity:Liver, skeletal and heart muscle, mammary cells. Very low levels in brain, lung, placenta and kidney.,

**Nanjing BYabs science technology Co.,Ltd**



## Background

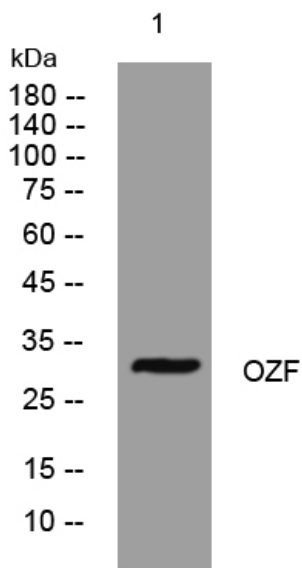
### matters needing attention

Avoid repeated freezing and thawing!

### Usage suggestions

This product can be used in immunological reaction related experiments. For more information, please consult technical personnel.

## Products Images



Western blot analysis of lysates from KB cells, primary antibody was diluted at 1:1000, 4° over night