



# SARAF rabbit pAb

<b>Catalog No</b>	BYab-08280
<b>Isotype</b>	IgG
<b>Reactivity</b>	Human; Mouse;Rat
<b>Applications</b>	WB
<b>Gene Name</b>	TMEM66 SARAF XTP3 HSPC035 NPD003 PSEC0019 UNQ1967/PRO4499
<b>Protein Name</b>	SARAF
<b>Immunogen</b>	Synthesized peptide derived from human SARAF AA range: 277-327
<b>Specificity</b>	This antibody detects endogenous levels of SARAF at Human/Mouse/Rat
<b>Formulation</b>	Liquid in PBS containing 50% glycerol, 0.5% BSA and 0.02% sodium azide.
<b>Source</b>	Polyclonal, Rabbit,IgG
<b>Purification</b>	The antibody was affinity-purified from rabbit serum by affinity-chromatography using specific immunogen.
<b>Dilution</b>	WB 1: 500-2000
<b>Concentration</b>	1 mg/ml
<b>Purity</b>	≥90%
<b>Storage Stability</b>	-20°C/1 year
<b>Synonyms</b>	
<b>Observed Band</b>	
<b>Cell Pathway</b>	Endoplasmic reticulum membrane ; Single-pass type I membrane protein . Translocates to the endoplasmic reticulum-plasma membrane (ER-PM) region in a STIM1-dependent manner following cytosolic Ca(2+) elevation.; [Isoform 2]: Endoplasmic reticulum membrane; Single-pass type I membrane protein.
<b>Tissue Specificity</b>	Highly expressed in macrophages.
<b>Function</b>	similarity:Belongs to the TMEM66 family.,tissue specificity:Highly expressed in macrophages.,
<b>Background</b>	
<b>matters needing attention</b>	Avoid repeated freezing and thawing!

**Nanjing BYabs science technology Co.,Ltd**

网址: [www.njbybio.com](http://www.njbybio.com)

官方热线: 025-5229-8998

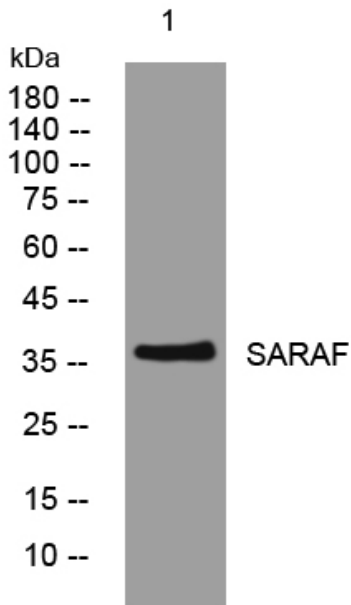
监督电话: 15950492658



### Usage suggestions

This product can be used in immunological reaction related experiments. For more information, please consult technical personnel.

### Products Images



Western blot analysis of lysates from 293T cells,  
primary antibody was diluted at 1:1000, 4° over night