



CAN15 rabbit pAb

Catalog No	BYab-08304
Isotype	IgG
Reactivity	Human; Mouse
Applications	WB
Gene Name	SOLH CAPN15
Protein Name	CAN15
Immunogen	Synthesized peptide derived from human CAN15 AA range: 153-203
Specificity	This antibody detects endogenous levels of CAN15 at Human/Mouse
Formulation	Liquid in PBS containing 50% glycerol, 0.5% BSA and 0.02% sodium azide.
Source	Polyclonal, Rabbit,IgG
Purification	The antibody was affinity-purified from rabbit serum by affinity-chromatography using specific immunogen.
Dilution	WB 1: 500-2000
Concentration	1 mg/ml
Purity	≥90%
Storage Stability	-20°C/1 year
Synonyms	
Observed Band	
Cell Pathway	cytoplasm,
Tissue Specificity	Widely expressed with higher expression in brain.
Function	similarity:Belongs to the peptidase C2 family.,similarity:Contains 1 calpain catalytic domain.,similarity:Contains 5 RanBP2-type zinc fingers.,tissue specificity:Widely expressed with higher expression in brain.,
Background	This gene encodes a protein containing zinc-finger-like repeats and a calpain-like protease domain. The encoded protein may function as a transcription factor, RNA-binding protein, or in protein-protein interactions during visual system development. [provided by RefSeq, Jul 2008],
matters needing attention	Avoid repeated freezing and thawing!

Nanjing BYabscience technology Co.,Ltd

网址: www.njbybio.com

官方热线: 025-5229-8998

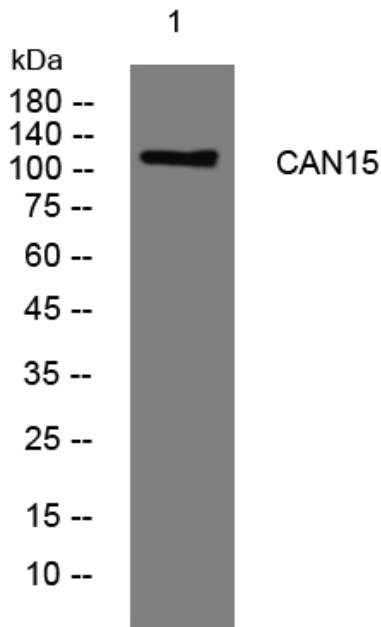
监督电话: 15950492658



Usage suggestions

This product can be used in immunological reaction related experiments. For more information, please consult technical personnel.

Products Images



Western blot analysis of lysates from HpeG2 cells, primary antibody was diluted at 1:1000, 4° over night