



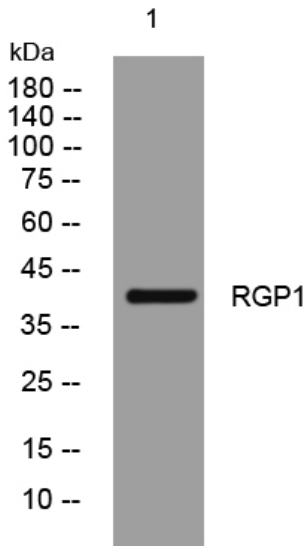
# RGP1 rabbit pAb

Catalog No	BYab-08318
Isotype	IgG
Reactivity	Human; Mouse
Applications	WB
Gene Name	RGP1 KIAA0258
Protein Name	RGP1
Immunogen	Synthesized peptide derived from human RGP1 AA range: 27-77
Specificity	This antibody detects endogenous levels of RGP1 at Human/Mouse
Formulation	Liquid in PBS containing 50% glycerol, 0.5% BSA and 0.02% sodium azide.
Source	Polyclonal, Rabbit,IgG
Purification	The antibody was affinity-purified from rabbit serum by affinity-chromatography using specific immunogen.
Dilution	WB 1: 500-2000
Concentration	1 mg/ml
Purity	≥90%
Storage Stability	-20°C/1 year
Synonyms	
Observed Band	
Cell Pathway	Cytoplasm, cytosol . Membrane .
Tissue Specificity	
Function	similarity:Belongs to the RGP1 family.,
Background	
matters needing attention	Avoid repeated freezing and thawing!
Usage suggestions	This product can be used in immunological reaction related experiments. For more information, please consult technical personnel.

Nanjing BYabscience technology Co.,Ltd



## Products Images



Western blot analysis of lysates from A431 cells,  
primary antibody was diluted at 1:1000, 4° over night