



SPC25 rabbit pAb

Catalog No	BYab-08338
Isotype	IgG
Reactivity	Human; Mouse;Rat
Applications	WB
Gene Name	SPC25 SPBC25 AD024
Protein Name	SPC25
Immunogen	Synthesized peptide derived from human SPC25 AA range: 17-67
Specificity	This antibody detects endogenous levels of SPC25 at Human/Mouse/Rat
Formulation	Liquid in PBS containing 50% glycerol, 0.5% BSA and 0.02% sodium azide.
Source	Polyclonal, Rabbit,IgG
Purification	The antibody was affinity-purified from rabbit serum by affinity-chromatography using specific immunogen.
Dilution	WB 1: 500-2000
Concentration	1 mg/ml
Purity	≥90%
Storage Stability	-20°C/1 year
Synonyms	
Observed Band	
Cell Pathway	Nucleus. Chromosome, centromere, kinetochore . Localizes to kinetochores from late prophase to anaphase (PubMed:14738735). Localizes specifically to the outer plate of the kinetochore (PubMed:14738735, PubMed:14699129). .
Tissue Specificity	
Function	function:Acts as a component of the essential kinetochore-associated NDC80 complex, which is required for chromosome segregation and spindle checkpoint activity. Required for kinetochore integrity and the organization of stable microtubule binding sites in the outer plate of the kinetochore.,similarity:Belongs to the SPC25 family.,subcellular location:Localizes to kinetochores from late prophase to anaphase. Localizes specifically to the outer plate of the kinetochore.,subunit:Component of the NDC80 complex, which consists of NDC80/HEC1, CDCA1, SPBC24 and SPBC25. The NDC80 complex is formed by two subcomplexes composed of NDC80/HEC1-CDCA1 and SPBC24-SPBC25. Each subcomplex is formed by parallel interactions through the coiled-coil domains of individual subunits. Formation of a tetrameric complex is mediated by

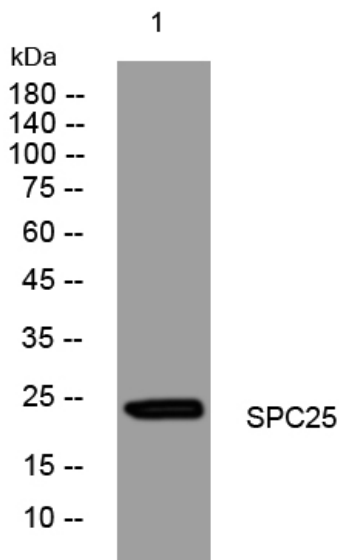
Nanjing BYabscience technology Co.,Ltd



interactions between the C-terminal regions of both subunits of the NDC80/HEC1

Background	This gene encodes a protein that may be involved in kinetochore-microtubule interaction and spindle checkpoint activity. [provided by RefSeq, Jul 2008],
matters needing attention	Avoid repeated freezing and thawing!
Usage suggestions	This product can be used in immunological reaction related experiments. For more information, please consult technical personnel.

Products Images



Western blot analysis of lysates from KB cells, primary antibody was diluted at 1:1000, 4° over night