



# DSCR3 rabbit pAb

Catalog No	BYab-08355
Isotype	IgG
Reactivity	Human; Mouse
Applications	WB
Gene Name	DSCR3 DCRA DSCRA
Protein Name	DSCR3
Immunogen	Synthesized peptide derived from human DSCR3 AA range: 163-213
Specificity	This antibody detects endogenous levels of DSCR3 at Human/Mouse
Formulation	Liquid in PBS containing 50% glycerol, 0.5% BSA and 0.02% sodium azide.
Source	Polyclonal, Rabbit,IgG
Purification	The antibody was affinity-purified from rabbit serum by affinity-chromatography using specific immunogen.
Dilution	WB 1: 500-2000
Concentration	1 mg/ml
Purity	≥90%
Storage Stability	-20°C/1 year
Synonyms	
Observed Band	
Cell Pathway	Endosome .
Tissue Specificity	Ubiquitously expressed.
Function	similarity:Belongs to the VPS26 family.,tissue specificity:Ubiquitously expressed.,
Background	The region of chromosome 21 between genes CBR and ERG (CBR-ERG region), which spans 2.5 Mb on 21q22.2, has been defined by analysis of patients with partial trisomy 21. It contributes significantly to the pathogenesis of many characteristics of Down syndrome, including morphological features, hypotonia, and mental retardation. The DSCR3 (Down syndrome critical region gene 3) gene is found in this region and is predicted to contain eight exons. DSCR3 is expressed in most tissues examined. [provided by RefSeq, Jul 2008],

Nanjing BYabscience technology Co.,Ltd

网址: [www.njbybio.com](http://www.njbybio.com)

官方热线: 025-5229-8998

监督电话: 15950492658



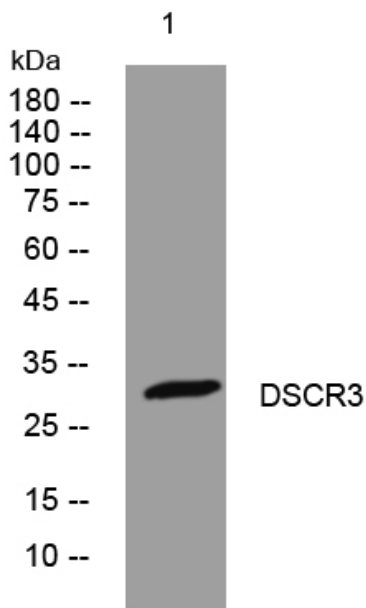
**matters needing attention**

Avoid repeated freezing and thawing!

**Usage suggestions**

This product can be used in immunological reaction related experiments. For more information, please consult technical personnel.

**Products Images**



Western blot analysis of lysates from HeLa cells, primary antibody was diluted at 1:1000, 4° over night