



BIVM rabbit pAb

Catalog No	BYab-08356
Isotype	IgG
Reactivity	Human; Mouse
Applications	WB
Gene Name	BIVM
Protein Name	BIVM
Immunogen	Synthesized peptide derived from human BIVM AA range: 450-500
Specificity	This antibody detects endogenous levels of BIVM at Human/Mouse
Formulation	Liquid in PBS containing 50% glycerol, 0.5% BSA and 0.02% sodium azide.
Source	Polyclonal, Rabbit,IgG
Purification	The antibody was affinity-purified from rabbit serum by affinity-chromatography using specific immunogen.
Dilution	WB 1: 500-2000
Concentration	1 mg/ml
Purity	≥90%
Storage Stability	-20°C/1 year
Synonyms	
Observed Band	
Cell Pathway	Cytoplasm . Nucleus .
Tissue Specificity	Widely expressed. Expressed at higher level in spleen, ovary, small intestine, colon, peripheral blood leukocytes and liver. Also expressed in testis, ovary, aorta, appendix, trachea, pituitary gland, bladder, uterus, spinal cord, salivary gland, stomach, mammary gland and bone marrow. Weakly or not expressed in fetal spleen, adult thymus and certain cancer cell lines.
Function	similarity:Belongs to the BIVM family.,tissue specificity:Widely expressed. Expressed at higher level in spleen, ovary, small intestine, colon, peripheral blood leukocytes and liver. Also expressed in testis, ovary, aorta, appendix, trachea, pituitary gland, bladder, uterus, spinal cord, salivary gland, stomach, mammary gland and bone marrow. Weakly or not expressed in fetal spleen, adult thymus and certain cancer cell lines.,
Background	

Nanjing BYabs science technology Co.,Ltd



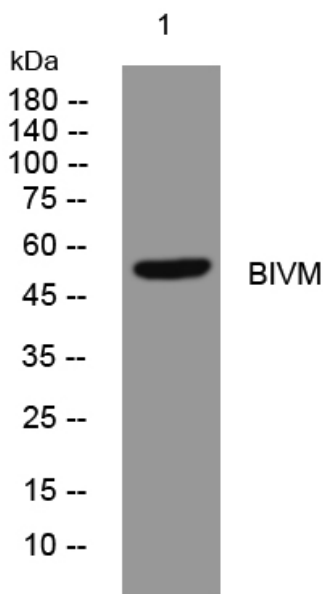
matters needing attention

Avoid repeated freezing and thawing!

Usage suggestions

This product can be used in immunological reaction related experiments. For more information, please consult technical personnel.

Products Images



Western blot analysis of lysates from MDA-MB cells, primary antibody was diluted at 1:1000, 4° over night