



# SNAPN rabbit pAb

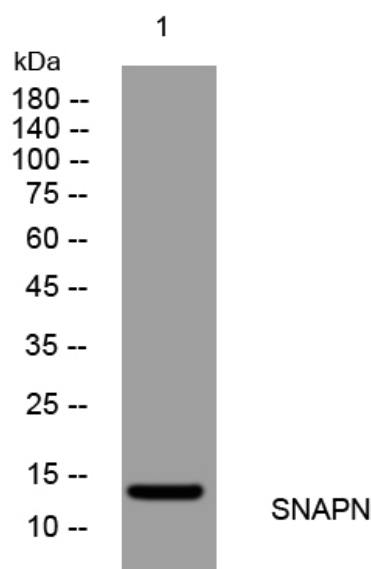
|                           |   |
|---------------------------|---|
| <b>Catalog No</b>         | BYab-08367  |
| <b>Isotype</b>            | IgG   |
| <b>Reactivity</b>         | Human; Mouse;Rat  |
| <b>Applications</b>       | WB  |
| <b>Gene Name</b>          | SNAPIN SNAP25BP SNAPAP  |
| <b>Protein Name</b>       | SNAPN   |
| <b>Immunogen</b>          | Synthesized peptide derived from human SNAPN AA range: 9-59   |
| <b>Specificity</b>        | This antibody detects endogenous levels of SNAPN at Human/Mouse/Rat   |
| <b>Formulation</b>        | Liquid in PBS containing 50% glycerol, 0.5% BSA and 0.02% sodium azide.   |
| <b>Source</b>             | Polyclonal, Rabbit,IgG  |
| <b>Purification</b>       | The antibody was affinity-purified from rabbit serum by affinity-chromatography using specific immunogen.   |
| <b>Dilution</b>           | WB 1: 500-2000  |
| <b>Concentration</b>      | 1 mg/ml   |
| <b>Purity</b>             | ≥90%  |
| <b>Storage Stability</b>  | -20°C/1 year  |
| <b>Synonyms</b>           |   |
| <b>Observed Band</b>      |   |
| <b>Cell Pathway</b>       | Membrane ; Peripheral membrane protein ; Cytoplasmic side . Cytoplasm, cytosol . Cytoplasm, perinuclear region . Golgi apparatus membrane . Lysosome membrane . Cytoplasmic vesicle, secretory vesicle, synaptic vesicle membrane . Colocalizes with NANOS1 and PUM2 in the perinuclear region of germ cells. .   |
| <b>Tissue Specificity</b> | Expressed in male germ cells of adult testis (at protein level).  |
| <b>Function</b>           | function:May modulate a step between vesicle priming, fusion and calcium-dependent neurotransmitter release by potentiating the interaction of synaptotagmins with the SNAREs and the plasma-membrane-associated protein SNAP25. Its phosphorylation state influences exocytotic protein interactions and may regulate synaptic vesicle exocytosis. May also have a role in the mechanisms of SNARE-mediated membrane fusion in non-neuronal cells.,PTM:Phosphorylated.,subcellular location:May be cytoplasmic and peripheral membrane bound or anchored to the vesicular membrane through an N-terminal signal anchor.,subunit:Associates with the SNARE complex. Interacts with SNAP23, SNAP25 and STX4A but not with STX1A, VAMP2 and SYT1. |

**Nanjing BYabscience technology Co.,Ltd**



|                                  |  |
|----------------------------------|--|
|                                  | Phosphorylation increases its interaction with SNAP25 (By similarity). Interacts with RGS7. Component of the biogenesis of lysosome-related organelles (BLOC-1) complex which is req   |
| <b>Background</b>                | The protein encoded by this gene is a coiled-coil-forming protein that associates with the SNARE (soluble N-ethylmaleimide-sensitive fusion protein attachment protein receptor) complex of proteins and the BLOC-1 (biogenesis of lysosome-related organelles) complex. Biochemical studies have identified additional binding partners. As part of the SNARE complex, it is required for vesicle docking and fusion and regulates neurotransmitter release. The BLOC-1 complex is required for the biogenesis of specialized organelles such as melanosomes and platelet dense granules. Mutations in gene products that form the BLOC-1 complex have been identified in mouse strains that are models of Hermansky-Pudlak syndrome. Alternative splicing results in multiple transcript variants. [provided by RefSeq, Jun 2012], |
| <b>matters needing attention</b> | Avoid repeated freezing and thawing!   |
| <b>Usage suggestions</b>         | This product can be used in immunological reaction related experiments. For more information, please consult technical personnel.  |

## Products Images



Nanjing BYabscience technology Co.,Ltd

网址: [www.njbybio.com](http://www.njbybio.com)

官方热线: 025-5229-8998

监督电话: 15950492658