



KRIP1 rabbit pAb

Catalog No	BYab-08400
Isotype	IgG
Reactivity	Human;Rat;Mouse;
Applications	WB
Gene Name	KLKP1 KLK31P
Protein Name	KRIP1
Immunogen	Synthesized peptide derived from human KRIP1 AA range: 53-103
Specificity	This antibody detects endogenous levels of KRIP1 at Human
Formulation	Liquid in PBS containing 50% glycerol, 0.5% BSA and 0.02% sodium azide.
Source	Polyclonal, Rabbit,IgG
Purification	The antibody was affinity-purified from rabbit serum by affinity-chromatography using specific immunogen.
Dilution	WB 1: 500-2000
Concentration	1 mg/ml
Purity	≥90%
Storage Stability	-20°C/1 year
Synonyms	
Observed Band	
Cell Pathway	Cytoplasm . Nucleus .
Tissue Specificity	Abundant expression is found in prostate, restricted to cells of epithelial origin in normal and diseased glands. Very low expression is detected in pancreas and ovary.
Function	caution:Was named (PubMed:18196551) 'Kallikrein-related in prostate protein 1' because this protein is encoded by a transcript from the KLKP1 gene region. It is encoded in an exon which is similar to the intronic region between exons 1 and 2 of KLK1, KLK2 and KLK3.,induction:By androgens.,tissue specificity:Abundant expression is found in prostate, restricted to cells of epithelial origin in normal and diseased glands. Very low expression is detected in pancreas and ovary.,
Background	

Nanjing BYabscience technology Co.,Ltd



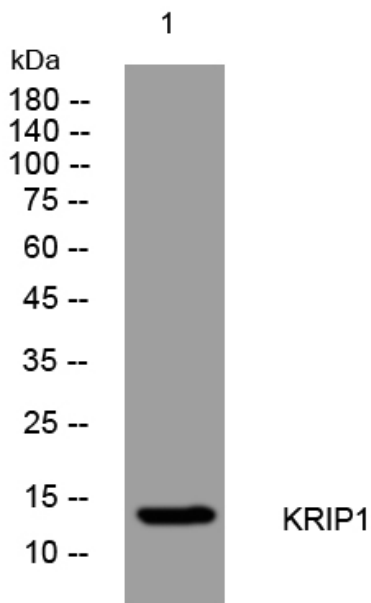
matters needing attention

Avoid repeated freezing and thawing!

Usage suggestions

This product can be used in immunological reaction related experiments. For more information, please consult technical personnel.

Products Images



Western blot analysis of lysates from MDA-MB cells, primary antibody was diluted at 1:1000, 4° over night