



# LUZP2 rabbit pAb

Catalog No	BYab-08466
Isotype	IgG
Reactivity	Human; Mouse
Applications	WB
Gene Name	LUZP2 UNQ2566/PRO6246
Protein Name	LUZP2
Immunogen	Synthesized peptide derived from human LUZP2 AA range: 135-185
Specificity	This antibody detects endogenous levels of LUZP2 at Human/Mouse
Formulation	Liquid in PBS containing 50% glycerol, 0.5% BSA and 0.02% sodium azide.
Source	Polyclonal, Rabbit,IgG
Purification	The antibody was affinity-purified from rabbit serum by affinity-chromatography using specific immunogen.
Dilution	WB 1: 500-2000
Concentration	1 mg/ml
Purity	≥90%
Storage Stability	-20°C/1 year
Synonyms	
Observed Band	
Cell Pathway	Secreted .
Tissue Specificity	
Function	disease:Deletion of the LUZP2 gene may be a cause of Wilms tumor--aniridia--genitourinary anomalies--mental retardation syndrome (WAGR) [MIM:194072].,
Background	This gene encodes a leucine zipper protein. This protein is deleted in some patients with Wilms tumor-Aniridia-Genitourinary anomalies-mental Retardation (WAGR) syndrome. Alternate splicing results in multiple transcript variants. [provided by RefSeq, Oct 2011],
matters needing attention	Avoid repeated freezing and thawing!

Nanjing BYabscience technology Co.,Ltd

网址: [www.njbybio.com](http://www.njbybio.com)

官方热线: 025-5229-8998

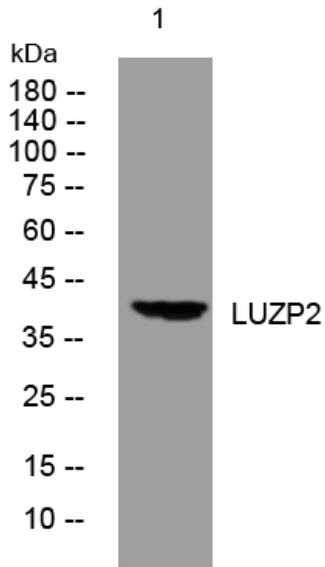
监督电话: 15950492658



### Usage suggestions

This product can be used in immunological reaction related experiments. For more information, please consult technical personnel.

### Products Images



Western blot analysis of lysates from HpeG2 cells, primary antibody was diluted at 1:1000, 4° over night