



# ELF2 rabbit pAb

<b>Catalog No</b>	BYab-08478
<b>Isotype</b>	IgG
<b>Reactivity</b>	Human; Mouse
<b>Applications</b>	WB
<b>Gene Name</b>	ELF2 NERF
<b>Protein Name</b>	ELF2
<b>Immunogen</b>	Synthesized peptide derived from human ELF2 AA range: 80-130
<b>Specificity</b>	This antibody detects endogenous levels of ELF2 at Human/Mouse
<b>Formulation</b>	Liquid in PBS containing 50% glycerol, 0.5% BSA and 0.02% sodium azide.
<b>Source</b>	Polyclonal, Rabbit,IgG
<b>Purification</b>	The antibody was affinity-purified from rabbit serum by affinity-chromatography using specific immunogen.
<b>Dilution</b>	WB 1: 500-2000
<b>Concentration</b>	1 mg/ml
<b>Purity</b>	≥90%
<b>Storage Stability</b>	-20°C/1 year
<b>Synonyms</b>	
<b>Observed Band</b>	
<b>Cell Pathway</b>	Nucleus.
<b>Tissue Specificity</b>	Expressed in all fetal and adult tissues examined. Among fetal tissues, highest levels of expression detected in heart, lung, liver and kidney, and lower levels in brain. Among adult tissues, highest levels of expression detected in heart, placenta, lung, skeletal muscle, spleen, thymus, testis and ovary. Moderate expression in prostate, small intestine, kidney, liver and pancreas, and weak expression in colon, brain and peripheral blood lymphocytes.
<b>Function</b>	function:Isoform 1 transcriptionally activates the LYN and BLK promoters and acts synergistically with RUNX1 to transactivate the BLK promoter. Isoform 2 may function in repression of RUNX1-mediated transactivation.,similarity:Belongs to the ETS family.,similarity:Contains 1 ETS DNA-binding domain.,subunit:Interacts with the LIM domains of LMO2 (By similarity). Interacts via its N-terminal region with RUNX1.,tissue specificity:Expressed in all fetal and adult tissues examined. Among fetal tissues, highest levels of expression detected in heart, lung, liver and kidney, and lower levels in brain. Among adult tissues, highest levels of

**Nanjing BYabscience technology Co.,Ltd**



expression detected in heart, placenta, lung, skeletal muscle, spleen, thymus, testis and ovary. Moderate expression in prostate, small intestine, kidney, liver and pancreas, and weak expression in colon, brain and peripheral blood lymphocytes.,

## Background

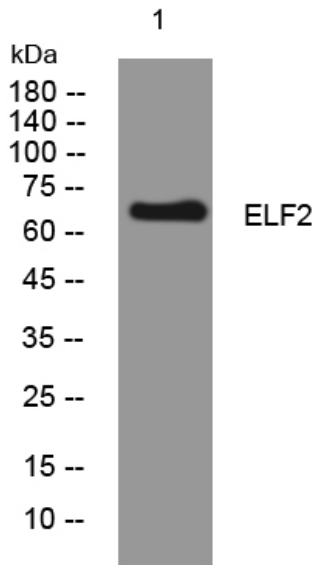
### matters needing attention

Avoid repeated freezing and thawing!

### Usage suggestions

This product can be used in immunological reaction related experiments. For more information, please consult technical personnel.

## Products Images



Western blot analysis of lysates from Jarkat cells, primary antibody was diluted at 1:1000, 4° over night