



PTBP3 rabbit pAb

Catalog No	BYab-08512
Isotype	IgG
Reactivity	Human; Mouse;Rat
Applications	WB
Gene Name	PTBP3 ROD1
Protein Name	PTBP3
Immunogen	Synthesized peptide derived from human PTBP3 AA range: 103-153
Specificity	This antibody detects endogenous levels of PTBP3 at Human/Mouse/Rat
Formulation	Liquid in PBS containing 50% glycerol, 0.5% BSA and 0.02% sodium azide.
Source	Polyclonal, Rabbit,IgG
Purification	The antibody was affinity-purified from rabbit serum by affinity-chromatography using specific immunogen.
Dilution	WB 1: 500-2000
Concentration	1 mg/ml
Purity	≥90%
Storage Stability	-20°C/1 year
Synonyms	
Observed Band	
Cell Pathway	nucleus,
Tissue Specificity	Expressed in several hematopoietic cell lines examined.
Function	function:May play a role in regulation of differentiation. In vitro, binds RNA, preferentially to both poly(G) and poly(U). Overexpressed, blocks differentiation of K562 leukemia cells following treatment with phorbol esters or sodium butyrate without affecting proliferation.,similarity:Contains 4 RRM (RNA recognition motif) domains.,tissue specificity:Expressed in several hematopoietic cell lines examined.,
Background	The protein encoded by this gene binds RNA and is a regulator of cell differentiation. The encoded protein preferentially binds to poly(G) and poly(U) sequences in vitro. Several transcript variants encoding different isoforms have been found for this gene. [provided by RefSeq, Oct 2011],

Nanjing BYabscience technology Co.,Ltd



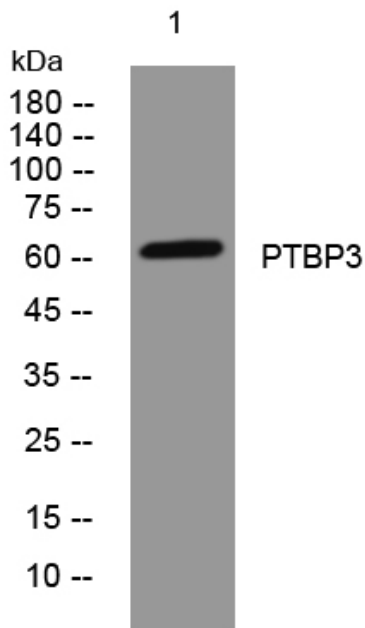
matters needing attention

Avoid repeated freezing and thawing!

Usage suggestions

This product can be used in immunological reaction related experiments. For more information, please consult technical personnel.

Products Images



Western blot analysis of lysates from SW480 cells, primary antibody was diluted at 1:1000, 4° over night