



# AMZ2 rabbit pAb

<b>Catalog No</b>	BYab-08562
<b>Isotype</b>	IgG
<b>Reactivity</b>	Human; Mouse;Rat
<b>Applications</b>	WB
<b>Gene Name</b>	AMZ2 BM-014
<b>Protein Name</b>	AMZ2
<b>Immunogen</b>	Synthesized peptide derived from human AMZ2 AA range: 99-149
<b>Specificity</b>	This antibody detects endogenous levels of AMZ2 at Human/Mouse/Rat
<b>Formulation</b>	Liquid in PBS containing 50% glycerol, 0.5% BSA and 0.02% sodium azide.
<b>Source</b>	Polyclonal, Rabbit,IgG
<b>Purification</b>	The antibody was affinity-purified from rabbit serum by affinity-chromatography using specific immunogen.
<b>Dilution</b>	WB 1: 500-2000
<b>Concentration</b>	1 mg/ml
<b>Purity</b>	≥90%
<b>Storage Stability</b>	-20°C/1 year
<b>Synonyms</b>	
<b>Observed Band</b>	
<b>Cell Pathway</b>	
<b>Tissue Specificity</b>	Down-regulated in testis from patients with maturation arrest (MA) or Sertoli cell-only syndrome (SCOS).
<b>Function</b>	caution:The sequence shown here is derived from an Ensembl automatic analysis pipeline and should be considered as preliminary data.,enzyme regulation:Inhibited by the general metalloprotease inhibitors o-phenanthroline and batimastat. Also significantly inhibited by amastatin, which is an inhibitor of aminopeptidases. Not inhibited by 4-(2-aminoethyl)-benzenesulfonyl fluoride, E-64, and TIMPS (tissue inhibitors of metalloproteinases), which are inhibitors of serine, cysteine, and matrix metalloproteases, respectively.,function:Zinc metalloprotease. Exhibits activity against angiotensin-3 in vitro. Does not hydrolyze either neurogranin or angiotensin-2.,sequence caution:Translated as Gly.,similarity:Belongs to the peptidase archaemetzincin family.,tissue specificity:Predominantly expressed in heart and testis. Also expressed at lower levels in kidney, liver, pancreas, lung, brain and pla

**Nanjing BYabscience technology Co.,Ltd**



## Background

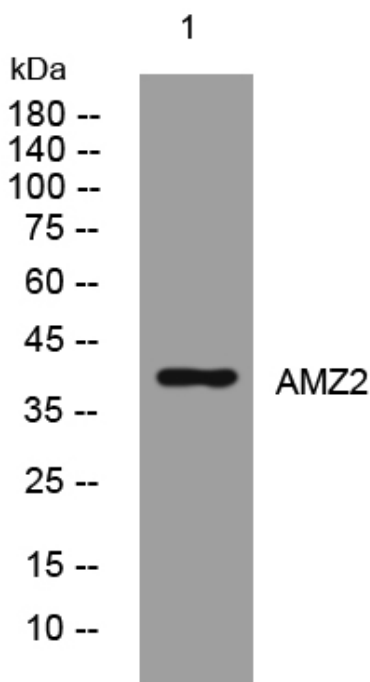
### matters needing attention

Avoid repeated freezing and thawing!

### Usage suggestions

This product can be used in immunological reaction related experiments. For more information, please consult technical personnel.

## Products Images



Western blot analysis of lysates from CACO2 cells, primary antibody was diluted at 1:1000, 4° over night