



FA83H rabbit pAb

Catalog No	BYab-08611
Isotype	IgG
Reactivity	Human; Mouse
Applications	WB
Gene Name	FAM83H
Protein Name	FA83H
Immunogen	Synthesized peptide derived from human FA83H AA range: 327-377
Specificity	This antibody detects endogenous levels of FA83H at Human/Mouse
Formulation	Liquid in PBS containing 50% glycerol, 0.5% BSA and 0.02% sodium azide.
Source	Polyclonal, Rabbit,IgG
Purification	The antibody was affinity-purified from rabbit serum by affinity-chromatography using specific immunogen.
Dilution	WB 1: 500-2000
Concentration	1 mg/ml
Purity	≥90%
Storage Stability	-20°C/1 year
Synonyms	
Observed Band	
Cell Pathway	Cytoplasm, cytoskeleton . Colocalizes with keratin filaments. .
Tissue Specificity	Expressed in the tooth follicle.
Function	disease:Defects in FAM83H are the cause of amelogenesis imperfecta type 3 (AI3) [MIM:130900]. AI3 is an autosomal dominant hypomineralized form of amelogenesis imperfecta, a defect of enamel formation. AI3 is characterized by enamel of normal thickness, but soft and with cheesy consistency. Enamel is lost from tooth soon after eruption.,function:May play a major role in the structural organization and calcification of developing enamel.,similarity:Belongs to the FAM83 family.,tissue specificity:Expressed in the tooth follicle.,
Background	The protein encoded by this gene plays an important role in the structural development and calcification of tooth enamel. Defects in this gene are a cause of amelogenesis imperfecta type 3 (AI3). [provided by RefSeq, Mar 2010],

Nanjing BYabscience technology Co.,Ltd

网址: www.njbybio.com

官方热线: 025-5229-8998

监督电话: 15950492658



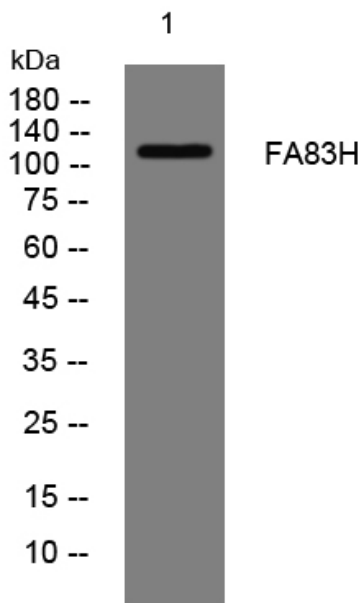
matters needing attention

Avoid repeated freezing and thawing!

Usage suggestions

This product can be used in immunological reaction related experiments. For more information, please consult technical personnel.

Products Images



Western blot analysis of lysates from KB cells, primary antibody was diluted at 1:1000, 4° over night