



UT2 rabbit pAb

Catalog No	BYab-08618
Isotype	IgG
Reactivity	Human; Mouse;Rat
Applications	WB
Gene Name	SLC14A2 HUT2 UT2
Protein Name	UT2
Immunogen	Synthesized peptide derived from human UT2 AA range: 429-479
Specificity	This antibody detects endogenous levels of UT2 at Human/Mouse/Rat
Formulation	Liquid in PBS containing 50% glycerol, 0.5% BSA and 0.02% sodium azide.
Source	Polyclonal, Rabbit,IgG
Purification	The antibody was affinity-purified from rabbit serum by affinity-chromatography using specific immunogen.
Dilution	WB 1: 500-2000
Concentration	1 mg/ml
Purity	≥90%
Storage Stability	-20°C/1 year
Synonyms	
Observed Band	
Cell Pathway	Apical cell membrane; Multi-pass membrane protein.
Tissue Specificity	Isoform 1 and isoform 2 are expressed in the inner medulla of the kidney.
Function	function:Specialized low-affinity vasopressin-regulated urea transporter. Mediates rapid transepithelial urea transport across the inner medullary collecting duct and plays a major role in the urinary concentrating mechanism.,induction:Isoform 1 is induced by low protein in the diet, isoform 2 by dehydration.,similarity:Belongs to the urea transporter family.,subunit:Isoform 1 interacts with SNAPIN which may be important for recruitment to the plasma membrane.,tissue specificity:Isoform 1 and isoform 2 are expressed in the inner medulla of the kidney.,
Background	The protein encoded by this gene belongs to the urea transporter family. In mammalian cells, urea is the chief end product of nitrogen catabolism, and plays an important role in the urinary concentration mechanism. This protein is expressed in the inner medulla of the kidney, and mediates rapid transepithelial

Nanjing BYabs science technology Co.,Ltd



urea transport across the inner medullary collecting duct. Alternatively spliced transcript variants have been found for this gene. [provided by RefSeq, Sep 2011],

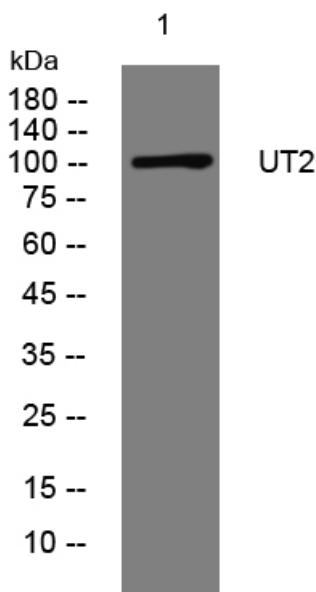
matters needing attention

Avoid repeated freezing and thawing!

Usage suggestions

This product can be used in immunological reaction related experiments. For more information, please consult technical personnel.

Products Images



Western blot analysis of lysates from HeLa cells, primary antibody was diluted at 1:1000, 4° over night