



RABX5 rabbit pAb

Catalog No	BYab-08626
Isotype	IgG
Reactivity	Human; Mouse
Applications	WB
Gene Name	RABGEF1 RABEX5
Protein Name	RABX5
Immunogen	Synthesized peptide derived from human RABX5 AA range: 291-341
Specificity	This antibody detects endogenous levels of RABX5 at Human/Mouse
Formulation	Liquid in PBS containing 50% glycerol, 0.5% BSA and 0.02% sodium azide.
Source	Polyclonal, Rabbit,IgG
Purification	The antibody was affinity-purified from rabbit serum by affinity-chromatography using specific immunogen.
Dilution	WB 1: 500-2000
Concentration	1 mg/ml
Purity	≥90%
Storage Stability	-20°C/1 year
Synonyms	
Observed Band	
Cell Pathway	Cytoplasm . Early endosome . Recycling endosome .
Tissue Specificity	
Function	function:Rab effector protein acting as linker between gamma-adaptin, RAB4A or RAB5A. Involved in endocytic membrane fusion and membrane trafficking of recycling endosomes. Stimulates nucleotide exchange on RAB5A. Can act as a ubiquitin ligase.,PTM:Monoubiquitinated.,similarity:Contains 1 A20-type zinc finger.,similarity:Contains 1 VPS9 domain.,subunit:Heterodimer with RABEP1. The heterodimer binds RAB4A and RAB5A that have been activated by GTP-binding. Interacts with RAB21, and with 100-fold lower affinity also with RAB22. Binds TSC2, GGA1, GGA2, GGA3, AP1G1 and AP1G2. Interacts with ubiquitinated EGFR.,
Background	RABGEF1 forms a complex with rabaptin-5 (RABPT5; MIM 603616) that is required for endocytic membrane fusion, and it serves as a specific guanine

Nanjing BYabscience technology Co.,Ltd



nucleotide exchange factor (GEF) for RAB5 (RAB5A; MIM 179512) (Horiuchi et al., 1997 [PubMed 9323142]).[supplied by OMIM, Mar 2010],

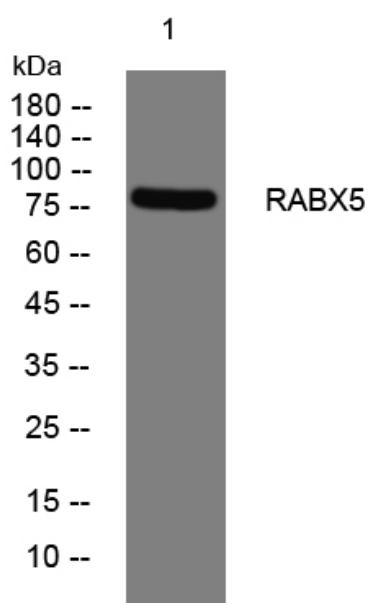
matters needing attention

Avoid repeated freezing and thawing!

Usage suggestions

This product can be used in immunological reaction related experiments. For more information, please consult technical personnel.

Products Images



Western blot analysis of lysates from PC-12 cells, primary antibody was diluted at 1:1000, 4° over night