



# CAR18 rabbit pAb

<b>Catalog No</b>	BYab-08653
<b>Isotype</b>	IgG
<b>Reactivity</b>	Human;Rat;Mouse;
<b>Applications</b>	IHC;IF
<b>Gene Name</b>	CARD18 ICEBERG UNQ5804/PRO19611
<b>Protein Name</b>	CAR18
<b>Immunogen</b>	Synthesized peptide derived from human CAR18 AA range: 30-110
<b>Specificity</b>	This antibody detects endogenous levels of CAR18 at Human
<b>Formulation</b>	Liquid in PBS containing 50% glycerol, 0.5% BSA and 0.02% sodium azide.
<b>Source</b>	Polyclonal, Rabbit,IgG
<b>Purification</b>	The antibody was affinity-purified from rabbit serum by affinity-chromatography using specific immunogen.
<b>Dilution</b>	IHC-p 1: 50-200. IF 1:50-200
<b>Concentration</b>	1 mg/ml
<b>Purity</b>	≥90%
<b>Storage Stability</b>	-20°C/1 year
<b>Synonyms</b>	
<b>Observed Band</b>	
<b>Cell Pathway</b>	
<b>Tissue Specificity</b>	Primarily expressed in the heart and placenta.
<b>Function</b>	function:Inhibits generation of IL-1-beta by interacting with caspase-1 and preventing its association with RIP2.,similarity:Contains 1 CARD domain.,subunit:Interacts with pro-CASP1. Interacts with CARD8.,tissue specificity:Primarily expressed in the heart and placenta.,
<b>Background</b>	
<b>matters needing attention</b>	Avoid repeated freezing and thawing!

**Nanjing BYabscience technology Co.,Ltd**

网址: [www.njbybio.com](http://www.njbybio.com)

官方热线: 025-5229-8998

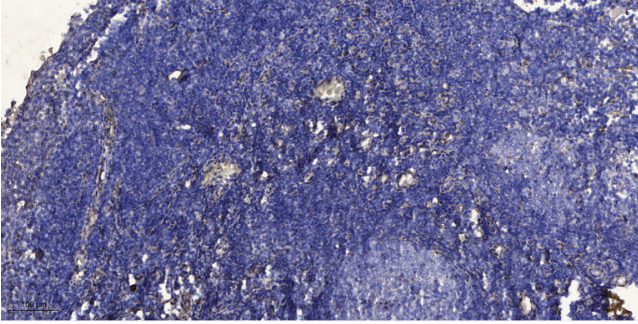
监督电话: 15950492658



### Usage suggestions

This product can be used in immunological reaction related experiments. For more information, please consult technical personnel.

### Products Images



Immunohistochemical analysis of paraffin-embedded human tonsil. 1, Antibody was diluted at 1:200(4° overnight). 2, Tris-EDTA,pH9.0 was used for antigen retrieval. 3,Secondary antibody was diluted at 1:200(room temperature, 30min).