



## B3GN8 rabbit pAb

<b>Catalog No</b>	BYab-08670
<b>Isotype</b>	IgG
<b>Reactivity</b>	Human; Mouse
<b>Applications</b>	WB
<b>Gene Name</b>	B3GNT8 B3GALT7 BGALT15
<b>Protein Name</b>	B3GN8
<b>Immunogen</b>	Synthesized peptide derived from human B3GN8 AA range: 218-268
<b>Specificity</b>	This antibody detects endogenous levels of B3GN8 at Human/Mouse
<b>Formulation</b>	Liquid in PBS containing 50% glycerol, 0.5% BSA and 0.02% sodium azide.
<b>Source</b>	Polyclonal, Rabbit,IgG
<b>Purification</b>	The antibody was affinity-purified from rabbit serum by affinity-chromatography using specific immunogen.
<b>Dilution</b>	WB 1: 500-2000
<b>Concentration</b>	1 mg/ml
<b>Purity</b>	≥90%
<b>Storage Stability</b>	-20°C/1 year
<b>Synonyms</b>	
<b>Observed Band</b>	
<b>Cell Pathway</b>	Golgi apparatus membrane ; Single-pass type II membrane protein .
<b>Tissue Specificity</b>	Highly expressed in small intestine, pancreas, spleen, bone marrow, lung, throat, and ileum, and weakly in fetal brain, cerebellum, heart, liver, tongue, breast, uteri, and testis. Not detected in colon. Differentially expressed in human tumor cell lines.
<b>Function</b>	function:Beta-1,3-N-acetylglucosaminyltransferase that plays a role in the elongation of specific branch structures of multiantennary N-glycans. Has strong activity towards tetraantennary N-glycans and 2,6 triantennary glycans.,induction:Up-regulated in colon cancer.,online information:GlycoGene database,pathway:Protein modification; protein glycosylation.,similarity:Belongs to the glycosyltransferase 31 family.,subunit:Forms a complex of enhanced enzymatic activity with B3GNT2 in vitro.,tissue specificity:Highly expressed in small intestine, pancreas, spleen, bone marrow, lung, throat, and ileum, and weakly in fetal brain, cerebellum, heart, liver, tongue, breast, uteri, and testis. Not detected in colon. Differentially expressed in human tumor cell lines.,

**Nanjing BYabscience technology Co.,Ltd**



## Background

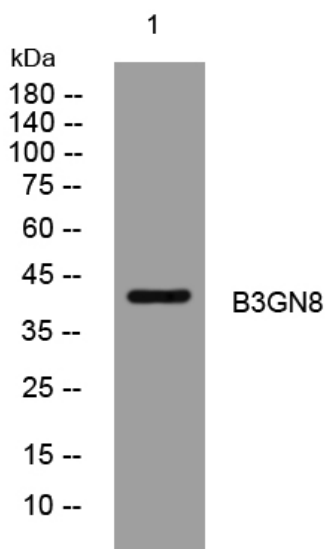
### matters needing attention

Avoid repeated freezing and thawing!

### Usage suggestions

This product can be used in immunological reaction related experiments. For more information, please consult technical personnel.

## Products Images



Western blot analysis of lysates from HeLa cells, primary antibody was diluted at 1:1000, 4° over night