



CP093 rabbit pAb

Catalog No	BYab-08685
Isotype	IgG
Reactivity	Human; Mouse
Applications	WB
Gene Name	C16orf93
Protein Name	CP093
Immunogen	Synthesized peptide derived from human CP093 AA range: 250-300
Specificity	This antibody detects endogenous levels of CP093 at Human/Mouse
Formulation	Liquid in PBS containing 50% glycerol, 0.5% BSA and 0.02% sodium azide.
Source	Polyclonal, Rabbit,IgG
Purification	The antibody was affinity-purified from rabbit serum by affinity-chromatography using specific immunogen.
Dilution	WB 1: 500-2000
Concentration	1 mg/ml
Purity	≥90%
Storage Stability	-20°C/1 year
Synonyms	
Observed Band	
Cell Pathway	Cell projection, cilium, flagellum . Cytoplasmic vesicle, secretory vesicle, acrosome . Cytoplasm . In elongated spermatids, enriched in the principal piece of flagella where it is peri-axonemal. Disappears from sperm heads upon acrosome reaction. .
Tissue Specificity	
Function	
Background	

Nanjing BYabscience technology Co.,Ltd

网址: www.njbybio.com

官方热线: 025-5229-8998

监督电话: 15950492658



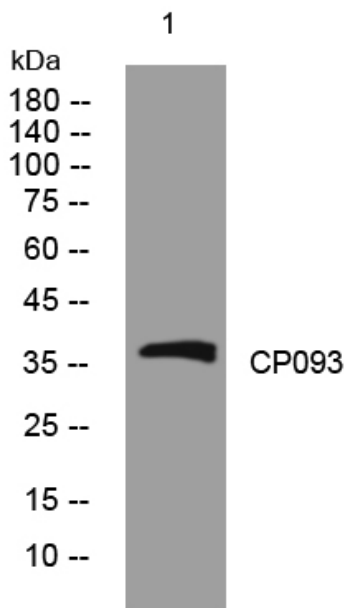
matters needing attention

Avoid repeated freezing and thawing!

Usage suggestions

This product can be used in immunological reaction related experiments. For more information, please consult technical personnel.

Products Images



Western blot analysis of lysates from 3T3 cells, primary antibody was diluted at 1:1000, 4° over night

Nanjing BYabs science technology Co.,Ltd

网址: www.njbybio.com

官方热线: 025-5229-8998

监督电话: 15950492658