



CSMD2 rabbit pAb

Catalog No	BYab-08697
Isotype	IgG
Reactivity	Human;Rat;Mouse;
Applications	IHC;IF
Gene Name	CSMD2 KIAA1884
Protein Name	CSMD2
Immunogen	Synthesized peptide derived from human CSMD2 AA range: 2638-2688
Specificity	This antibody detects endogenous levels of CSMD2 at Human
Formulation	Liquid in PBS containing 50% glycerol, 0.5% BSA and 0.02% sodium azide.
Source	Polyclonal, Rabbit,IgG
Purification	The antibody was affinity-purified from rabbit serum by affinity-chromatography using specific immunogen.
Dilution	IHC-p 1: 50-200. IF 1:50-200
Concentration	1 mg/ml
Purity	≥90%
Storage Stability	-20°C/1 year
Synonyms	
Observed Band	
Cell Pathway	Cell membrane ; Single-pass membrane protein .
Tissue Specificity	Weakly expressed in most tissues, except in brain. Expressed at intermediate level in brain, including cerebellum, substantia nigra, hippocampus and fetal brain. Overexpressed in some head and neck cancer cell lines.
Function	similarity:Belongs to the CSMD family.,similarity:Contains 14 CUB domains.,similarity:Contains 26 Sushi (CCP/SCR) domains.,tissue specificity:Weakly expressed in most tissues, except in brain. Expressed at intermediate level in brain, including cerebellum, substantia nigra, hippocampus and fetal brain. Overexpressed in some head and neck cancer cell lines.,
Background	
matters needing attention	Avoid repeated freezing and thawing!

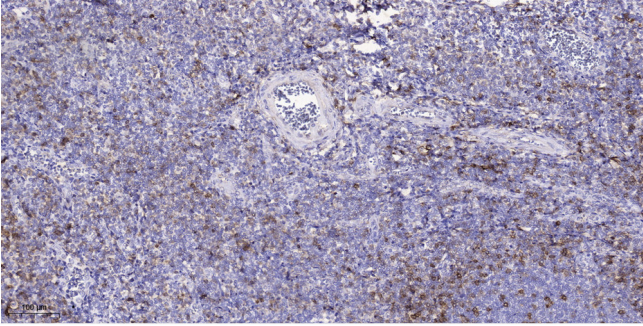
Nanjing BYabs science technology Co.,Ltd



Usage suggestions

This product can be used in immunological reaction related experiments. For more information, please consult technical personnel.

Products Images



Immunohistochemical analysis of paraffin-embedded human tonsil. 1, Antibody was diluted at 1:200(4° overnight). 2, Tris-EDTA,pH9.0 was used for antigen retrieval. 3,Secondary antibody was diluted at 1:200(room temperature, 45min).