



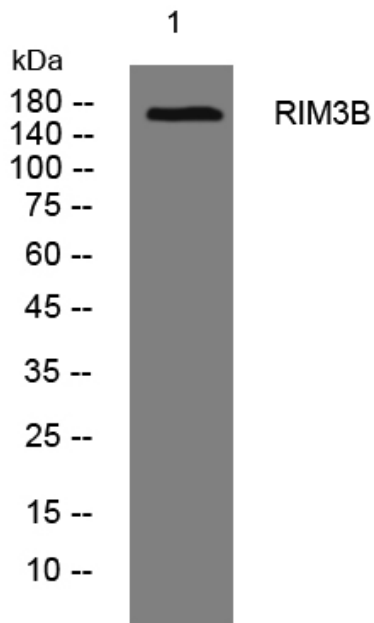
RIM3B rabbit pAb

Catalog No	BYab-08712
Isotype	IgG
Reactivity	Human;Rat;Mouse;
Applications	WB
Gene Name	RIMBP3B
Protein Name	RIM3B
Immunogen	Synthesized peptide derived from human RIM3B AA range: 1348-1398
Specificity	This antibody detects endogenous levels of RIM3B at Human
Formulation	Liquid in PBS containing 50% glycerol, 0.5% BSA and 0.02% sodium azide.
Source	Polyclonal, Rabbit,IgG
Purification	The antibody was affinity-purified from rabbit serum by affinity-chromatography using specific immunogen.
Dilution	WB 1: 500-2000
Concentration	1 mg/ml
Purity	≥90%
Storage Stability	-20°C/1 year
Synonyms	
Observed Band	
Cell Pathway	Cytoplasm, cytoskeleton .
Tissue Specificity	
Function	similarity:Belongs to the RIMBP family.,similarity:Contains 2 fibronectin type-III domains.,similarity:Contains 3 SH3 domains.,
Background	
matters needing attention	Avoid repeated freezing and thawing!
Usage suggestions	This product can be used in immunological reaction related experiments. For more information, please consult technical personnel.

Nanjing BYabscience technology Co.,Ltd



Products Images



Western blot analysis of lysates from HpeG2 cells,
primary antibody was diluted at 1:1000, 4° over night