



DOC2A rabbit pAb

Catalog No	BYab-08727
Isotype	IgG
Reactivity	Human; Mouse;Rat
Applications	WB
Gene Name	DOC2A
Protein Name	DOC2A
Immunogen	Synthesized peptide derived from human DOC2A AA range: 22-72
Specificity	This antibody detects endogenous levels of DOC2A at Human/Mouse/Rat
Formulation	Liquid in PBS containing 50% glycerol, 0.5% BSA and 0.02% sodium azide.
Source	Polyclonal, Rabbit,IgG
Purification	The antibody was affinity-purified from rabbit serum by affinity-chromatography using specific immunogen.
Dilution	WB 1: 500-2000
Concentration	1 mg/ml
Purity	≥90%
Storage Stability	-20°C/1 year
Synonyms	
Observed Band	
Cell Pathway	Lysosome . Cytoplasmic vesicle, secretory vesicle, synaptic vesicle membrane ; Peripheral membrane protein . Cell junction, synapse, synaptosome.
Tissue Specificity	Predominantly expressed in brain. Also expressed in testis.
Function	domain:C2 domain 1 is involved in binding calcium and phospholipids.,function:May be involved in calcium dependent neurotransmitter release through the interaction with UNC13A. May be involved in dynein-dependent intracellular vesicle transport. In vitro, binds calcium and phospholipids.,similarity:Contains 2 C2 domains.,subcellular location:Colocalizes to synaptic vesicles.,subunit:Interacts through its N-terminus with UNC13A. Interacts with cytoplasmic dynein light chain TCTEL1/TCTEX1.,tissue specificity:Predominantly expressed in brain. Also expressed in testis.,
Background	There are at least two protein isoforms of the Double C2 protein, namely alpha (DOC2A) and beta (DOC2B), which contain two C2-like domains. DOC2A and DOC2B are encoded by different genes; these genes are at times confused with

Nanjing BYabscience technology Co.,Ltd



the unrelated DAB2 gene which was initially named DOC-2. DOC2A is mainly expressed in brain and is suggested to be involved in Ca(2+)-dependent neurotransmitter release. Alternative splicing results in multiple transcript variants. [provided by RefSeq, Aug 2013],

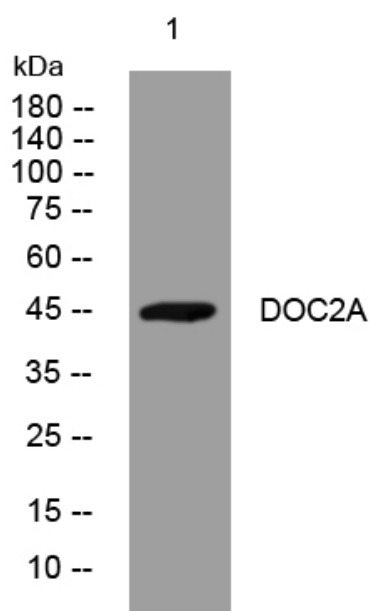
matters needing attention

Avoid repeated freezing and thawing!

Usage suggestions

This product can be used in immunological reaction related experiments. For more information, please consult technical personnel.

Products Images



Western blot analysis of lysates from A431 cells, primary antibody was diluted at 1:1000, 4° over night

Nanjing BYabscience technology Co.,Ltd

网址: www.njbybio.com

官方热线: 025-5229-8998

监督电话: 15950492658