



TMC2 rabbit pAb

Catalog No	BYab-08738
Isotype	IgG
Reactivity	Human; Mouse
Applications	WB
Gene Name	TMC2 C20orf145 UNQ907/PRO1928
Protein Name	TMC2
Immunogen	Synthesized peptide derived from human TMC2 AA range: 705-755
Specificity	This antibody detects endogenous levels of TMC2 at Human/Mouse
Formulation	Liquid in PBS containing 50% glycerol, 0.5% BSA and 0.02% sodium azide.
Source	Polyclonal, Rabbit,IgG
Purification	The antibody was affinity-purified from rabbit serum by affinity-chromatography using specific immunogen.
Dilution	WB 1: 500-2000
Concentration	1 mg/ml
Purity	≥90%
Storage Stability	-20°C/1 year
Synonyms	
Observed Band	
Cell Pathway	Cell membrane ; Multi-pass membrane protein . Localized to the stereocilia of the cochlear hair cells. .
Tissue Specificity	Detected in fetal cochlea.
Function	function:May be required for the normal function of cochlear hair cells.,similarity:Belongs to the TMC family.,tissue specificity:Detected in fetal cochlea.,
Background	This gene encodes a transmembrane protein that is necessary for mechanotransduction in cochlear hair cells of the inner ear. Mutations in this gene may underlie hereditary disorders of balance and hearing. [provided by RefSeq, Aug 2015],
matters needing attention	Avoid repeated freezing and thawing!

Nanjing BYabscience technology Co.,Ltd

网址: www.njbybio.com

官方热线: 025-5229-8998

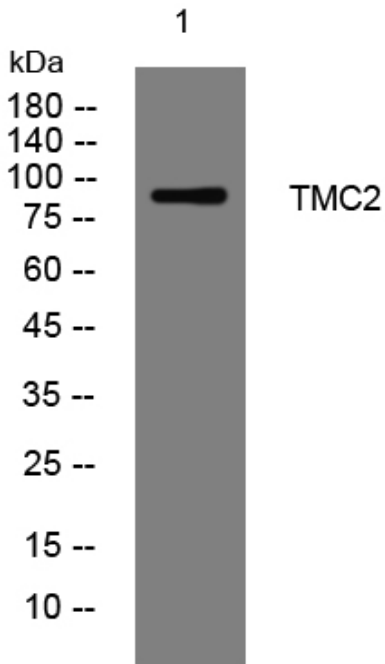
监督电话: 15950492658



Usage suggestions

This product can be used in immunological reaction related experiments. For more information, please consult technical personnel.

Products Images



Western blot analysis of lysates from A431 cells,
primary antibody was diluted at 1:1000, 4° over night